

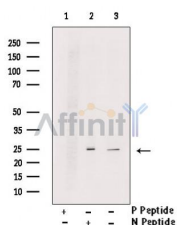
## Phospho-MFF (Ser172/146) Ab

Cat.#: AF2365  
Size: 100ul, 200ul

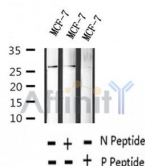
Concn.: 1mg/ml  
Source: Rabbit

Mol.Wt.: 25, 27kDa  
Clonality: Polyclonal

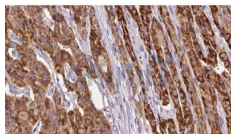
Application:	WB 1:500-1:2000, IHC 1:50-1:200
Reactivity:	Human
Purification:	The Ab is from purified rabbit serum by affinity purification via sequential chromatography on phospho- and non-phospho-peptide affinity columns.
Specificity:	Phospho-MFF (Ser172) Ab detects endogenous levels of MFF.
Immunogen:	A synthesized peptide derived from human MFF around the phosphorylation site of Ser172.
Uniprot:	Q9GZY8
Subcellular Location:	Mitochondrion outer membrane.
Tissue Specificity:	Highly expressed in heart, kidney, liver, brain, muscle, and stomach.
Similarity:	Belongs to the Tango11 family.
Storage Condition and Buffer:	Rabbit IgG in phosphate buffered saline , pH 7.4, 150mM NaCl, 0.02% sodium azide and 50% glycerol. Store at -20 °C. Stable for 12 months from date of receipt.



Western blot analysis of extracts from MCF-7 cells, using Phospho-MFF (Ser172/146) Ab. Lane1 was treated with phospho-blocking peptide, Lane2 was treated with non-phospho-blocking peptide.



Western blot analysis of extracts from MCF-7 cells, using Phospho-MFF (Ser172) Ab.



AF2365 at 1/100 staining Human thyroid cancer tissue by IHC-P. The sample was formaldehyde fixed and a heat mediated antigen retrieval step in citrate buffer was performed. The sample was then blocked and incubated with the Ab for 1.5 hours at 22°C. An HRP conjugated goat anti-rabbit Ab was used as the secondary.

**IMPORTANT:** For western blot, incubate membrane with diluted primary Ab in 5% w/v milk, 1X TBS, 0.1% Tween@20 at 4°C with gentle shaking, overnight.

For Research Use Only. Not for use in diagnostic and therapeutic procedures. Not for resale without express authorization.