

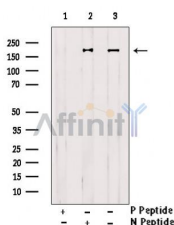
Phospho-HER2/ErbB2 (Tyr1221/1222) Ab

Cat.#: AF2349
Size: 100ul,200ul

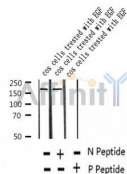
Concn.: 1mg/ml
Source: Rabbit

Mol.Wt.: 185kDa
Clonality: Polyclonal

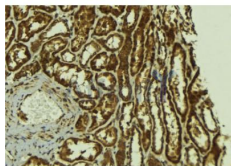
| | |
|-------------------------------|---|
| Application: | WB 1:500-1:2000, IHC 1:50-1:200 |
| Reactivity: | Human, Mouse |
| Purification: | The Ab is from purified rabbit serum by affinity purification via sequential chromatography on phospho- and non-phospho-peptide affinity columns. |
| Specificity: | Phospho-HER2/ErbB2 (Tyr1221/1222) Ab detects endogenous levels of HER2/ErbB2. |
| Immunogen: | A synthesized peptide derived from human HER2/ErbB2 around the phosphorylation site of Tyr1221/1222. |
| Uniprot: | P04626 |
| Subcellular Location: | Cytoplasm. Nucleus and Cell membrane. Cytoplasm, perinuclear region. Nucleus. Translocation to the nucleus requires endocytosis, probably endosomal sorting and is mediated by importin beta-1/KPNB1. |
| Tissue Specificity: | Expressed in a variety of tumor tissues including primary breast tumors and tumors from small bowel, esophagus, kidney and mouth. |
| Similarity: | Belongs to the protein kinase superfamily. Tyr protein kinase family. EGF receptor subfamily. |
| Storage Condition and Buffer: | Rabbit IgG in phosphate buffered saline , pH 7.4, 150mM NaCl, 0.02% sodium azide and 50% glycerol. Store at -20 °C. Stable for 12 months from date of receipt. |



Western blot analysis of extracts from cos cells treated with EGF, using Phospho-HER2/ErbB2 (Tyr1221/1222) Ab. Lane 1 was treated with phospho-blocking peptide, Lane 2 was treated with non-phospho-blocking peptide.



Western blot analysis of extracts from cos cells treated with EGF, using Phospho-HER2/ErbB2 (Tyr1221/1222) Ab.



AF2349 at 1/100 staining Mouse kidney tissue by IHC-P. The sample was formaldehyde fixed and a heat mediated antigen retrieval step in citrate buffer was performed. The sample was then blocked and incubated with the Ab for 1.5 hours at 22°C. An HRP conjugated goat anti-rabbit Ab was used as the secondary.

IMPORTANT: For western blot, incubate membrane with diluted primary Ab in 5% w/v milk, 1X TBS, 0.1% Tween@20 at 4°C with gentle shaking, overnight.

For Research Use Only. Not for use in diagnostic and therapeutic procedures. Not for resale without express authorization.