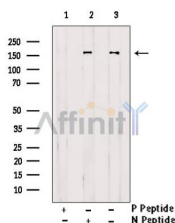

Phospho-FLT3 (Tyr969) Ab

Cat.#: AF2342
Size: 100ul,200ul

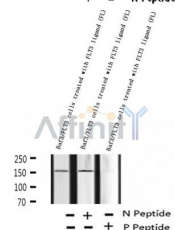
Concn.: 1mg/ml
Source: Rabbit

Mol.Wt.: 160kDa
Clonality: Polyclonal

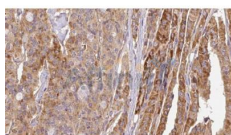
Application:	WB 1:500-1:2000, IHC 1:50-1:200
Reactivity:	Human, Mouse
Purification:	The Ab is from purified rabbit serum by affinity purification via sequential chromatography on phospho- and non-phospho-peptide affinity columns.
Specificity:	Phospho-FLT3 (Tyr969) Ab detects endogenous levels of FLT3.
Immunogen:	A synthesized peptide derived from human FLT3 around the phosphorylation site of Tyr969.
Uniprot:	P36888
Subcellular Location:	Membrane.
Tissue Specificity:	Detected in bone marrow, in hematopoietic stem cells, in myeloid progenitor cells and in granulocyte/macrophage progenitor cells (at protein level). Detected in bone marrow, liver, thymus, spleen and lymph node, and at low levels in kidney and pancreas. Highly expressed in T-cell leukemia.
Similarity:	The juxtamembrane autoregulatory region is important for normal regulation of the kinase activity and for maintaining the kinase in an inactive state in the absence of bound ligand. Upon tyrosine phosphorylation, it mediates interaction with the SH2 domains of numerous signaling partners. In-frame internal tandem duplications (ITDs) result in constitutive activation of the kinase. The activity of the mutant kinase can be stimulated further by FLT3LG binding. Belongs to the protein kinase superfamily. Tyr protein kinase family. CSF-1/PDGF receptor subfamily.
Storage Condition and Buffer:	Rabbit IgG in phosphate buffered saline , pH 7.4, 150mM NaCl, 0.02% sodium azide and 50% glycerol. Store at -20 °C. Stable for 12 months from date of receipt.



Western blot analysis of extracts from Baf3 cells treated with FLT3 ligand (FL), using Phospho-FLT3 (Tyr969) Ab. Lane1 was treated with phospho-blocking peptide, Lane2 was treated with non-phospho-blocking peptide.



Western blot analysis of extracts from Baf3/FLT3 cells treated with FLT3 ligand (FL), using Phospho-FLT3 (Tyr969) Ab .



AF2342 at 1/100 staining Human thyroid cancer tissue by IHC-P. The sample was formaldehyde fixed and a heat mediated antigen retrieval step in citrate buffer was performed. The sample was then blocked and incubated with the Ab for 1.5 hours at 22°C. An HRP conjugated goat anti-rabbit Ab was used as the secondary.

IMPORTANT: For western blot, incubate membrane with diluted primary Ab in 5% w/v milk , 1X TBS, 0.1% Tween@20 at 4°C with gentle shaking, overnight.

For Research Use Only. Not for use in diagnostic and therapeutic procedures. Not for resale without express authorization.