

Phospho-BTK(Tyr551) Ab

Cat.#: AF2310
Size: 100ul,200ul

Concn.: 1mg/ml
Source: Rabbit

Mol.Wt.: 78kDa
Clonality: Polyclonal

Application: WB 1:500-1:2000, IHC 1:50-1:200

Reactivity: Human, Mouse, Rat

Purification: The Ab is from purified rabbit serum by affinity purification via sequential chromatography on phospho- and non-phospho-peptide affinity columns.

Specificity: Phospho-BTK(Tyr551) Ab detects endogenous levels of BTK.

Immunogen: A synthesized peptide derived from human BTK around the phosphorylation site of Tyr551.

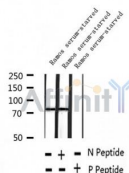
Uniprot: Q06187

Subcellular Location: Cytoplasm. Membrane. Nucleus.

Tissue Specificity: Predominantly expressed in B-lymphocytes.

Similarity: The PH domain mediates the binding to inositol polyphosphate and phosphoinositides, leading to its targeting to the plasma membrane. It is extended in the BTK kinase family by a region designated the TH (Tec homology) domain, which consists of about 80 residues preceding the SH3 domain. Belongs to the protein kinase superfamily. Tyr protein kinase family. TEC subfamily.

Storage Condition and Buffer: Rabbit IgG in phosphate buffered saline , pH 7.4, 150mM NaCl, 0.02% sodium azide and 50% glycerol. Store at -20 °C. Stable for 12 months from date of receipt.



Western blot analysis of extracts from Ramos serum-starved, using Phospho-BTK(Tyr551) Ab.



AF2310 at 1/100 staining Rat brain tissue by IHC-P. The sample was formaldehyde fixed and a heat mediated antigen retrieval step in citrate buffer was performed. The sample was then blocked and incubated with the Ab for 1.5 hours at 22°C. An HRP conjugated goat anti-rabbit Ab was used as the secondary.

IMPORTANT: For western blot, incubate membrane with diluted primary Ab in 5% w/v milk , 1X TBS, 0.1% Tween@20 at 4°C with gentle shaking, overnight.

For Research Use Only. Not for use in diagnostic and therapeutic procedures. Not for resale without express authorization.