

Phospho-4EBP1(Ser65/Thr70) Ab

Cat.#: AF2308
 Size: 100ul,200ul

Concn.: 1mg/ml
 Source: Rabbit

Mol.Wt.: 15 to 20kDa
 Clonality: Polyclonal

Application: WB 1:500-1:2000, IHC 1:50-1:200

Reactivity: Human,Mouse,Rat

Purification: The Ab is from purified rabbit serum by affinity purification via sequential chromatography on phospho- and non-phospho-peptide affinity columns.

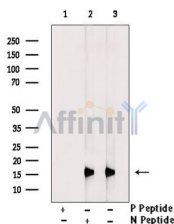
Specificity: Phospho-4EBP1(Ser65/Thr70) Ab detects endogenous levels of 4EBP1.

Immunogen: A synthesized peptide derived from human 4EBP1 around the phosphorylation site of Ser65/Thr70.

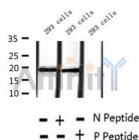
Uniprot: Q13541

Similarity: The TOS motif mediates interaction with RPTOR, leading to promote phosphorylation by mTORC1 complex.Belongs to the eIF4E-binding protein family.

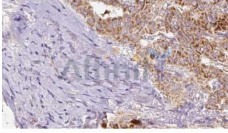
Storage Condition and Buffer: Rabbit IgG in phosphate buffered saline , pH 7.4, 150mM NaCl, 0.02% sodium azide and 50% glycerol.Store at -20 °C.Stable for 12 months from date of receipt.



Western blot analysis of extracts from 293 cells treated with 20% FBS , using Phospho-4EBP1(Ser65/Thr70) Ab. Lane1 was treated with phospho-blocking peptide, Lane2 was treated with non-phospho-blocking peptide.



Western blot analysis of extracts from 293 cells treated with 20% FBS , using Phospho-4EBP1(Ser65/Thr70) Ab.



AF2308 at 1/100 staining Human thyroid cancer tissue by IHC-P. The sample was formaldehyde fixed and a heat mediated antigen retrieval step in citrate buffer was performed. The sample was then blocked and incubated with the Ab for 1.5 hours at 22°C. An HRP conjugated goat anti-rabbit Ab was used as the secondary.

IMPORTANT: For western blot, incubate membrane with diluted primary Ab in 5% w/v milk , 1X TBS, 0.1% Tween@20 at 4°C with gentle shaking, overnight.

For Research Use Only. Not for use in diagnostic and therapeutic procedures. Not for resale without express authorization.