

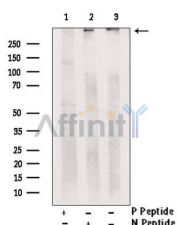
Phospho-RYR3(Ser160) Ab

Cat.#: AF2304
Size: 100ul,200ul

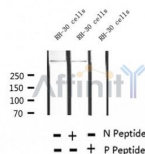
Concn.: 1mg/ml
Source: Rabbit

Mol.Wt.: 550 kDa
Clonality: Polyclonal

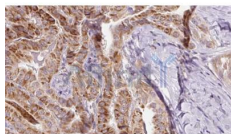
Application:	WB 1:500-1:2000, IHC 1:50-1:200
Reactivity:	Human,Mouse
Purification:	The Ab is from purified rabbit serum by affinity purification via sequential chromatography on phospho- and non-phospho-peptide affinity columns.
Specificity:	Phospho-RYR3(Ser160) Ab detects endogenous levels of RYR3.
Immunogen:	A synthesized peptide derived from human RYR3 around the phosphorylation site of Ser160.
Uniprot:	Q15413
Subcellular Location:	Endoplasmic reticulum;
Tissue Specificity:	Brain, skeletal muscle, placenta and possibly liver and kidney. In brain, highest levels are found in the cerebellum, hippocampus, caudate nucleus and amygdala, with lower levels in the corpus callosum, substantia nigra and thalamus.
Similarity:	The calcium release channel activity resides in the C-terminal region while the remaining part of the protein resides in the cytoplasm.Belongs to the ryanodine receptor (TC 1.A.3.1) family. RYR3 subfamily. [View classification]
Storage Condition and Buffer:	Rabbit IgG in phosphate buffered saline , pH 7.4, 150mM NaCl, 0.02% sodium azide and 50% glycerol.Store at -20 °C.Stable for 12 months from date of receipt.



Western blot analysis of extracts from RH-30 cells, using Phospho-RYR3(Ser160) Ab. Lane1 was treated with phospho-blocking peptide, Lane2 was treated with non-phospho-blocking peptide.



Western blot analysis of extracts from RH-30 cells, using Phospho-RYR3(Ser160) Ab.



AF2304 at 1/100 staining Human thyroid cancer tissue by IHC-P. The sample was formaldehyde fixed and a heat mediated antigen retrieval step in citrate buffer was performed. The sample was then blocked and incubated with the Ab for 1.5 hours at 22°C. An HRP conjugated goat anti-rabbit Ab was used as the secondary.

IMPORTANT: For western blot, incubate membrane with diluted primary Ab in 5% w/v milk, 1X TBS, 0.1% Tween@20 at 4°C with gentle shaking, overnight.

For Research Use Only. Not for use in diagnostic and therapeutic procedures. Not for resale without express authorization.