

## TMSB4X Ab

Cat.#: DF12334  
Size: 100ul, 200ul

Concn.: 1mg/ml  
Source: Rabbit

Mol.Wt.: 5 kDa  
Clonality: Polyclonal

Application: WB 1:500-1:2000, IHC 1:50-1:200, IF/ICC 1:100-1:500

Reactivity: Human, Mouse, Rat

Purification: The antiserum was purified by peptide affinity chromatography using SulfoLink™ Coupling Resin (Thermo Fisher Scientific).

Specificity: TMSB4X Ab detects endogenous levels of TMSB4X.

Immunogen: A synthesized peptide derived from human TMSB4X.

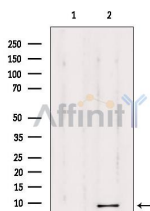
Uniprot: P62328

Subcellular Location: Cytoplasm > cytoskeleton.

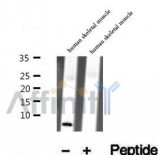
Tissue Specificity: Expressed in several hemopoietic cell lines and lymphoid malignant cells. Decreased levels in myeloma cells.

Similarity: Belongs to the thymosin beta family.

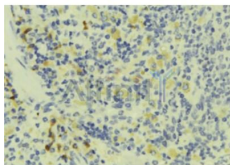
Storage Condition and Buffer: Rabbit IgG in phosphate buffered saline, pH 7.4, 150mM NaCl, 0.02% sodium azide and 50% glycerol. Store at -20 °C. Stable for 12 months from date of receipt.



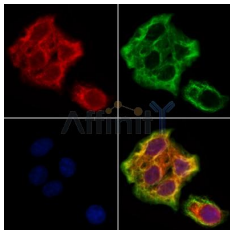
Western blot analysis of extracts from 293, using TMSB4X Ab. Lane 1 was treated with the blocking peptide.



Western blot analysis of extracts from human skeletal muscle tissue, using TMSB4X Ab.



DF12334 at 1/100 staining Human lymph tissue by IHC-P. The sample was formaldehyde fixed and a heat mediated antigen retrieval step in citrate buffer was performed. The sample was then blocked and incubated with the Ab for 1.5 hours at 22°C. An HRP conjugated goat anti-rabbit Ab was used as the secondary.



DF12334 staining HeLa cells by IF/ICC. The samples were fixed with PFA and permeabilized in 0.1% Triton X-100, then blocked in 10% serum for 45 minutes at 25°C. Samples were then incubated with primary Ab(DF12334 1:200) and mouse anti-beta tubulin Ab(T0023 1:200) for 1 hour at 37°C. An AlexaFluor594 conjugated goat anti-rabbit IgG(H+L) Ab(Red) and an AlexaFluor488 conjugated goat anti-mouse IgG(H+L) Ab(Green) were used as the secondary Ab.

**IMPORTANT:** For western blot, incubate membrane with diluted primary Ab in 5% w/v milk, 1X TBS, 0.1% Tween@20 at 4°C with gentle shaking, overnight.

For Research Use Only. Not for use in diagnostic and therapeutic procedures. Not for resale without express authorization.