

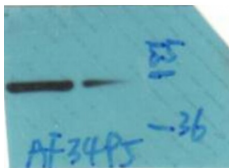
Phospho-IKK gamma (Ser31) Ab

Cat.#: AF3495
Size: 100ul,200ul

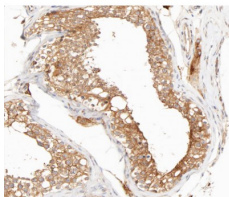
Concn.: 1mg/ml
Source: Rabbit

Mol.Wt.: 48kDa
Clonality: Polyclonal

| | |
|-------------------------------|---|
| Application: | WB 1:500-1:2000 IHC 1:50-1:200, IF/ICC 1:100-1:500 |
| Reactivity: | Human |
| Purification: | The Ab is from purified rabbit serum by affinity purification via sequential chromatography on phospho- and non-phospho-peptide affinity columns. |
| Specificity: | Phospho-IKK- gamma (Ser31) Ab detects endogenous levels of IKK- gamma only when phosphorylated at Serine 31. |
| Immunogen: | A synthesized peptide derived from human IKK- gamma around the phosphorylation site of Serine 31. |
| Uniprot: | Q9Y6K9 |
| Description: | Familial incontinentia pigmenti (IP) is a genodermatosis that segregates as an X-linked dominant disorder and is usually lethal prenatally in males (The International Incontinentia Pigmenti Consortium, 2000 [PubMed 10839543]). In affected females it causes highly variable abnormalities of the skin, hair, nails, teeth, eyes, and central nervous system. |
| Subcellular Location: | Cytoplasm. Nucleus. Sumoylated NEMO accumulates in the nucleus in response to genotoxic stress. |
| Tissue Specificity: | Heart, brain, placenta, lung, liver, skeletal muscle, kidney and pancreas. |
| Similarity: | The leucine-zipper domain and the CCHC NOA-type zinc-finger are essential for polyubiquitin binding and for the activation of IRF3. |
| Storage Condition and Buffer: | Rabbit IgG in phosphate buffered saline , pH 7.4, 150mM NaCl, 0.02% sodium azide and 50% glycerol.Store at -20 °C.Stable for 12 months from date of receipt. |



Western blot analysis of Phospho-IKK gamma (Ser31) Ab expression in TNF-a treated 293 cells lysates. The lane on the right was treated with the antigen-specific peptide.



AF3495 at 1/200 staining human testis tissue sections by IHC-P. The tissue was formaldehyde fixed and a heat mediated antigen retrieval step in citrate buffer was performed. The tissue was then blocked and incubated with the Ab for 1.5 hours at 22°C. An HRP conjugated goat anti-rabbit Ab was used as the secondary.



AF3495 staining 293 by IF/ICC. The sample were fixed with PFA and permeabilized in 0.1% Triton X-100, then blocked in 10% serum for 45 minutes at 25°C. The primary Ab was diluted at 1/200 and incubated with the sample for 1 hour at 37°C. An Alexa Fluor 594 conjugated goat anti-rabbit IgG (H+L) Ab, diluted at 1/600, was used as the secondary Ab.

IMPORTANT: For western blot, incubate membrane with diluted primary Ab in 5% w/v milk, 1X TBS, 0.1% Tween@20 at 4°C with gentle shaking, overnight.

For Research Use Only. Not for use in diagnostic and therapeutic procedures. Not for resale without express authorization.