

Histone H4 Ab

Cat.#: AF4653
Size: 50ul,100ul,200ul

Concn.: 1mg/ml
Source: Rabbit

Mol.Wt.: 11kDa
Clonality: Polyclonal

Application: WB 1:500-1:2000, IF/ICC 1:100-1:500

Reactivity: Human, Mouse, Rat, Pig, Bovine

Purification: The antiserum was purified by peptide affinity chromatography using SulfoLink™ Coupling Resin (Thermo Fisher Scientific).

Specificity: Histone H4 Ab detects endogenous levels of Histone H4.

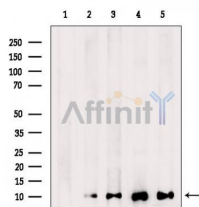
Immunogen: A synthesized peptide derived from human Histone H4.

Uniprot: P62805

Subcellular Location: Nucleus. Chromosome.

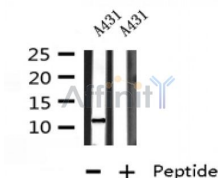
Similarity: Belongs to the histone H4 family.

Storage Condition and Buffer: Rabbit IgG in phosphate buffered saline , pH 7.4, 150mM NaCl, 0.02% sodium azide and 50% glycerol. Store at -20 °C. Stable for 12 months from date of receipt.



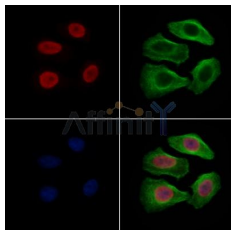
Western blot analysis of extracts from various samples, using Histone H4 Ab.

Lane 1: Mouse brain, treated with blocking peptide;
Lane 2: Mouse brain;
Lane 3: Mouse kidney;
Lane 4: Mcf7;
Lane 5: Myeloma cells.



Western blot analysis of Histone H4 in lysates of A431, using Histone H4 Ab (AF4653).

- + Peptide



AF4653 staining HepG2 cells by IF/ICC. The samples were fixed with PFA and permeabilized in 0.1% Triton X-100, then blocked in 10% serum for 45 minutes at 25°C. Samples were then incubated with primary Ab(AF4653 1:200) and mouse anti-beta tubulin Ab(T0023 1:200) for 1 hour at 37°C. An AlexaFluor594 conjugated goat anti-rabbit IgG(H+L) Ab(Red) and an AlexaFluor488 conjugated goat anti-mouse IgG(H+L) Ab(Green) were used as the secondary Ab.

IMPORTANT: For western blot, incubate membrane with diluted primary Ab in 5% w/v milk, 1X TBS, 0.1% Tween@20 at 4°C with gentle shaking, overnight.

For Research Use Only. Not for use in diagnostic and therapeutic procedures. Not for resale without express authorization.