

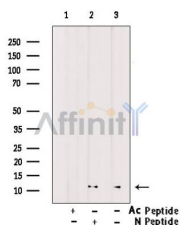
## Acetyl-Histone H4 (Lys91) Ab

Cat.#: AF4357  
Size: 50ul,100ul,200ul

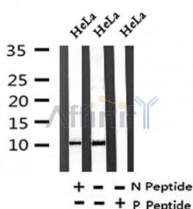
Concn.: 1mg/ml  
Source: Rabbit

Mol.Wt.: 11kDa  
Clonality: Polyclonal

Application:	WB 1:500-1:2000
Reactivity:	Human,Mouse,Rat,Pig,Bovine
Purification:	Immunogen affinity purified.
Specificity:	Histone H4 (acetyl K91) Ab detects endogenous levels of Histone H4 (acetyl K91).
Immunogen:	A synthesized peptide derived from human Histone H4 (acetyl K91).
Uniprot:	P62805
Subcellular Location:	Nucleus. Chromosome.
Similarity:	Belongs to the histone H4 family.
Storage Condition and Buffer:	Rabbit IgG in phosphate buffered saline , pH 7.4, 150mM NaCl, 0.02% sodium azide and 50% glycerol.Store at -20 °C.Stable for 12 months from date of receipt.



Western blot analysis of extracts from HeLa cells(TSA 1M, 18 hr), using Acetyl-Histone H4 (Lys91) Ab.  
Lane1 was treated with Ac-blocking peptide.  
Lane2 was treated with Non-Ac-blocking peptide.



Western blot analysis of Histone H4 (acetyl K91) in lysates of HeLa cells(TSA 1M, 18 hr), using Histone H4 (acetyl K91) Ab(AF4357).

**IMPORTANT:** For western blot, incubate membrane with diluted primary Ab in 5% w/v milk , 1X TBS, 0.1% Tween@20 at 4°C with gentle shaking, overnight.



**Affinity Biosciences**

website: [www.affbiotech.com](http://www.affbiotech.com)

order: [order@affbiotech.com](mailto:order@affbiotech.com)

---

For Research Use Only. Not for use in diagnostic and therapeutic procedures. Not for resale without express authorization.