

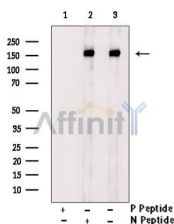
Phospho-HER4/ErbB4 (Tyr984) Ab

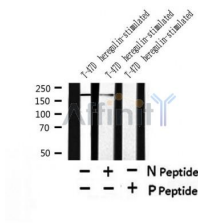
Cat.#: AF4475
Size: 100ul,200ul

Concn.: 1mg/ml
Source: Rabbit

Mol.Wt.: 180kDa
Clonality: Polyclonal

Application:	WB 1:500-1:2000
Reactivity:	Human,Mouse,Rat
Purification:	The Ab is from purified rabbit serum by affinity purification via sequential chromatography on phospho- and non-phospho-peptide affinity columns.
Specificity:	Phospho-HER4/ErbB4 (Tyr984) Ab detects endogenous levels of HER4/ErbB4 only when phosphorylated at Tyr984.
Immunogen:	A synthesized peptide derived from human HER4/ErbB4 around the phosphorylation site of Tyr984.
Uniprot:	Q15303
Subcellular Location:	Membrane and Nucleus. Following proteolytical processing E4ICD (E4ICD1 or E4ICD2 generated from the respective isoforms) is translocated to the nucleus. Significantly more E4ICD2 than E4ICD1 is found in the nucleus. E4ICD2 colocalizes with YAP1 in the nucleus.
Tissue Specificity:	Expressed at highest levels in brain, heart, kidney, in addition to skeletal muscle, parathyroid, cerebellum, pituitary, spleen, testis and breast. Lower levels in thymus, lung, salivary gland, and pancreas. Isoform JM-A CYT-1 and isoform JM-B CYT-1 are expressed in cerebellum, but only the isoform JM-B is expressed in the heart.
Similarity:	Belongs to the protein kinase superfamily. Tyr protein kinase family. EGF receptor subfamily.
Storage Condition and Buffer:	Rabbit IgG in phosphate buffered saline , pH 7.4, 150mM NaCl, 0.02% sodium azide and 50% glycerol.Store at -20 °C.Stable for 12 months from date of receipt.





Western blot analysis of Phospho-HER4/ErbB4 (Tyr984) in lysates of T-47D heregulin-stimulated, using Phospho-HER4/ErbB4 (Tyr984) Ab(AF4475).

IMPORTANT: For western blot, incubate membrane with diluted primary Ab in 5% w/v milk , 1X TBS, 0.1% Tween@20 at 4°C with gentle shaking, overnight.

For Research Use Only. Not for use in diagnostic and therapeutic procedures. Not for resale without express authorization.