

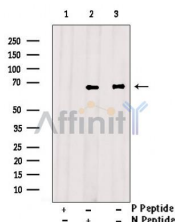
Phospho-Etk (Tyr40) Ab

Cat.#: AF4444
Size: 100ul,200ul

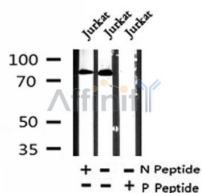
Concn.: 1mg/ml
Source: Rabbit

Mol.Wt.: 76kDa
Clonality: Polyclonal

Application:	WB 1:500-1:2000
Reactivity:	Human,Mouse
Purification:	The Ab is from purified rabbit serum by affinity purification via sequential chromatography on phospho- and non-phospho-peptide affinity columns.
Specificity:	Phospho-Etk (Tyr40) Ab detects endogenous levels of Etk only when phosphorylated at Tyr40.
Immunogen:	A synthesized peptide derived from human Etk around the phosphorylation site of Tyr40.
Uniprot:	P51813
Subcellular Location:	Cytoplasm.
Tissue Specificity:	Highly expressed in cells with great migratory potential, including endothelial cells and metastatic carcinoma cell lines.
Similarity:	SH2 domain mediates interaction with RUFY1.Belongs to the protein kinase superfamily. Tyr protein kinase family. TEC subfamily.
Storage Condition and Buffer:	Rabbit IgG in phosphate buffered saline , pH 7.4, 150mM NaCl, 0.02% sodium azide and 50% glycerol.Store at -20 °C.Stable for 12 months from date of receipt.



Western blot analysis of extracts from Jurkat , using Phospho-Etk (Tyr40) Ab. Lane1 was treated with phospho-blocking peptide, Lane2 was treated with non-phospho-blocking peptide.



Western blot analysis of Phospho-Etk (Tyr40) in lysates of Jurkat , using Phospho-Etk (Tyr40) Ab(AF4444).

IMPORTANT: For western blot, incubate membrane with diluted primary Ab in 5% w/v milk , 1X TBS, 0.1% Tween@20 at 4°C with gentle shaking, overnight.

For Research Use Only. Not for use in diagnostic and therapeutic procedures. Not for resale without express authorization.