

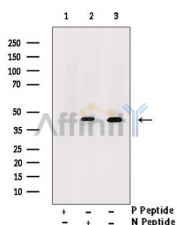
Phospho-TTF-1 (Ser327) Ab

Cat.#: AF4433
Size: 100ul, 200ul

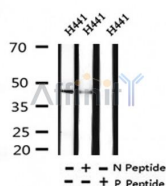
Concn.: 1mg/ml
Source: Rabbit

Mol.Wt.: 42kDa
Clonality: Polyclonal

| | |
|-------------------------------|---|
| Application: | WB 1:500-1:2000 |
| Reactivity: | Human, Mouse, Rat |
| Purification: | The Ab is from purified rabbit serum by affinity purification via sequential chromatography on phospho- and non-phospho-peptide affinity columns. |
| Specificity: | Phospho-TTF-1 (Ser327) Ab detects endogenous levels of TTF-1 only when phosphorylated at Ser327. |
| Immunogen: | A synthesized peptide derived from human TTF-1 around the phosphorylation site of Ser327. |
| Uniprot: | P43699 |
| Subcellular Location: | Nucleus. |
| Tissue Specificity: | Thyroid and lung. |
| Similarity: | Belongs to the NK-2 homeobox family. |
| Storage Condition and Buffer: | Rabbit IgG in phosphate buffered saline, pH 7.4, 150mM NaCl, 0.02% sodium azide and 50% glycerol. Store at -20 °C. Stable for 12 months from date of receipt. |



Western blot analysis of extracts from H441, using Phospho-TTF-1 (Ser327) Ab. Lane1 was treated with phospho-blocking peptide, Lane2 was treated with non-phospho-blocking peptide.



Western blot analysis of Phospho-TTF-1 (Ser327) in lysates of H441, using Phospho-TTF-1 (Ser327) Ab(AF4433).

IMPORTANT: For western blot, incubate membrane with diluted primary Ab in 5% w/v milk , 1X TBS, 0.1% Tween@20 at 4°C with gentle shaking, overnight.

For Research Use Only. Not for use in diagnostic and therapeutic procedures. Not for resale without express authorization.