

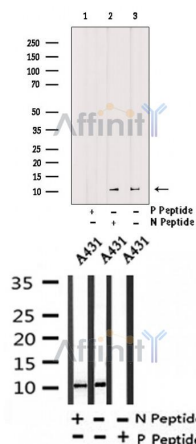
Phospho-Histone H4(Ser88) Ab

Cat.#: AF4358
Size: 100ul, 200ul

Concn.: 1mg/ml
Source: Rabbit

Mol.Wt.: 11kDa
Clonality: Polyclonal

Application:	WB 1:500-1:2000
Reactivity:	Human, Mouse, Rat, Pig, Bovine
Purification:	The Ab is from purified rabbit serum by affinity purification via sequential chromatography on phospho- and non-phospho-peptide affinity columns.
Specificity:	Phospho-Histone H4(Ser88) Ab detects endogenous levels of Histone H4 only when phosphorylated at Ser88.
Immunogen:	A synthesized peptide derived from human Histone H4 around the phosphorylation site of Ser88.
Uniprot:	P62805
Subcellular Location:	Nucleus. Chromosome.
Similarity:	Belongs to the histone H4 family.
Storage Condition and Buffer:	Rabbit IgG in phosphate buffered saline , pH 7.4, 150mM NaCl, 0.02% sodium azide and 50% glycerol. Store at -20 °C. Stable for 12 months from date of receipt.



Western blot analysis of extracts from A431, using Phospho-Histone H4(Ser88) Ab. Lane1 was treated with phospho-blocking peptide, Lane2 was treated with non-phospho-blocking peptide.

Western blot analysis of Phospho-Histone H4(Ser88) in lysates of A431, using Phospho-Histone H4(Ser88) Ab(AF4358).

IMPORTANT: For western blot, incubate membrane with diluted primary Ab in 5% w/v milk , 1X TBS, 0.1% Tween@20 at 4°C with gentle shaking,

overnight.

For Research Use Only. Not for use in diagnostic and therapeutic procedures. Not for resale without express authorization.