

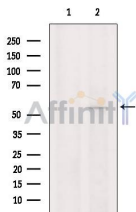
IRF-3 Ab

Cat.#: AF7887
Size: 50ul,100ul,200ul

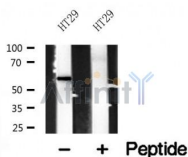
Concn.: 1mg/ml
Source: Rabbit

Mol.Wt.: 57kDa
Clonality: Polyclonal

Application:	WB 1:500-1:2000
Reactivity:	Human
Purification:	The antiserum was purified by peptide affinity chromatography using SulfoLink™ Coupling Resin (Thermo Fisher Scientific).
Specificity:	IRF-3 Ab detects endogenous levels of IRF-3.
Immunogen:	A synthesized peptide derived from human IRF-3.
Uniprot:	Q14653
Subcellular Location:	Cytoplasm. Nucleus. Shuttles between cytoplasmic and nuclear compartments, with export being the prevailing effect. When activated, IRF3 interaction with CREBBP prevents its export to the cytoplasm.
Tissue Specificity:	Expressed constitutively in a variety of tissues.
Similarity:	Belongs to the IRF family.
Storage Condition and Buffer:	Rabbit IgG in phosphate buffered saline , pH 7.4, 150mM NaCl, 0.02% sodium azide and 50% glycerol.Store at -20 °C.Stable for 12 months from date of receipt.



Western blot analysis of extracts from Hela cells, using IRF-3 Ab. The lane on the left was treated with blocking peptide.



Western blot analysis of IRF-3 in lysates of HT29, using IRF-3 Ab(AF7887).

IMPORTANT: For western blot, incubate membrane with diluted primary Ab in 5% w/v milk , 1X TBS, 0.1% Tween@20 at 4°C with gentle shaking, overnight.

For Research Use Only. Not for use in diagnostic and therapeutic procedures. Not for resale without express authorization.