

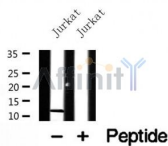
## 4E-BP1 Ab

Cat.#: AF7876  
Size: 50ul,100ul,200ul

Concn.: 1mg/ml  
Source: Rabbit

Mol.Wt.: 12kDa  
Clonality: Polyclonal

Application:	WB 1:500-1:2000
Reactivity:	Human,Mouse,Rat
Purification:	The antiserum was purified by peptide affinity chromatography using SulfoLink™ Coupling Resin (Thermo Fisher Scientific).
Specificity:	4E-BP1 Ab detects endogenous levels of 4E-BP1.
Immunogen:	A synthesized peptide derived from human 4E-BP1.
Uniprot:	Q13541
Similarity:	The TOS motif mediates interaction with RPTOR, leading to promote phosphorylation by mTORC1 complex.Belongs to the eIF4E-binding protein family.
Storage Condition and Buffer:	Rabbit IgG in phosphate buffered saline , pH 7.4, 150mM NaCl, 0.02% sodium azide and 50% glycerol.Store at -20 °C.Stable for 12 months from date of receipt.



Western blot analysis of 4E-BP1 in lysates of Jurkat , using 4E-BP1 Ab(AF7876).

**IMPORTANT:** For western blot, incubate membrane with diluted primary Ab in 5% w/v milk , 1X TBS, 0.1% Tween@20 at 4°C with gentle shaking, overnight.

For Research Use Only. Not for use in diagnostic and therapeutic procedures. Not for resale without express authorization.