

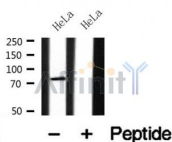
BTK Ab

Cat.#: AF7854
Size: 50ul,100ul,200ul

Concn.: 1mg/ml
Source: Rabbit

Mol.Wt.: 77kDa
Clonality: Polyclonal

Application:	WB 1:500-1:2000
Reactivity:	Human,Mouse,Rat
Purification:	The antiserum was purified by peptide affinity chromatography using SulfoLink™ Coupling Resin (Thermo Fisher Scientific).
Specificity:	BTK Ab detects endogenous levels of BTK.
Immunogen:	A synthesized peptide derived from human BTK.
Uniprot:	Q06187
Subcellular Location:	Cytoplasm. Membrane. Nucleus.
Tissue Specificity:	Predominantly expressed in B-lymphocytes.
Similarity:	The PH domain mediates the binding to inositol polyphosphate and phosphoinositides, leading to its targeting to the plasma membrane. It is extended in the BTK kinase family by a region designated the TH (Tec homology) domain, which consists of about 80 residues preceding the SH3 domain.Belongs to the protein kinase superfamily. Tyr protein kinase family. TEC subfamily.
Storage Condition and Buffer:	Rabbit IgG in phosphate buffered saline , pH 7.4, 150mM NaCl, 0.02% sodium azide and 50% glycerol.Store at -20 °C.Stable for 12 months from date of receipt.



Western blot analysis of BTK in lysates of HeLa , using BTK Ab(AF7854).

IMPORTANT: For western blot, incubate membrane with diluted primary Ab in 5% w/v milk , 1X TBS, 0.1% Tween@20 at 4°C with gentle shaking, overnight.

procedures. Not for resale without express authorization.