

eIF4G Ab

Cat.#: AF7849
Size: 50ul,100ul,200ul

Concn.: 1mg/ml
Source: Rabbit

Mol.Wt.: 220kDa
Clonality: Polyclonal

Application: WB 1:500-1:2000

Reactivity: Human,Mouse,Rat

Purification: The antiserum was purified by peptide affinity chromatography using SulfoLink™ Coupling Resin (Thermo Fisher Scientific).

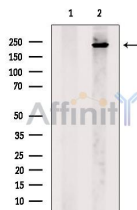
Specificity: eIF4G Ab detects endogenous levels of eIF4G.

Immunogen: A synthesized peptide derived from human eIF4G.

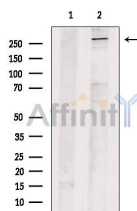
Uniprot: Q04637

Similarity: Belongs to the eukaryotic initiation factor 4G family.

Storage Condition and Buffer: Rabbit IgG in phosphate buffered saline , pH 7.4, 150mM NaCl, 0.02% sodium azide and 50% glycerol.Store at -20 °C.Stable for 12 months from date of receipt.

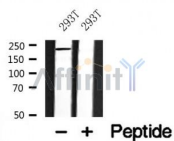


Western blot analysis of extracts from 293t, using eIF4G Ab. The lane on the left was treated with blocking peptide.



Western blot analysis of extracts from EC304 cells, using eIF4G Ab. The lane on the left was treated with blocking peptide.

Observed bands: 280 kDa.



Western blot analysis of eIF4G in lysates of 293T , using eIF4G Ab(AF7849).

IMPORTANT: For western blot, incubate membrane with diluted primary Ab in 5% w/v milk , 1X TBS, 0.1% Tween@20 at 4°C with gentle shaking, overnight.

For Research Use Only. Not for use in diagnostic and therapeutic procedures. Not for resale without express authorization.