

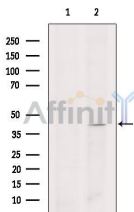
## GATA3 Ab

Cat.#: AF7771  
Size: 50ul,100ul,200ul

Concn.: 1mg/ml  
Source: Rabbit

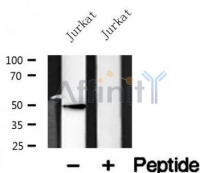
Mol.Wt.: 48kDa  
Clonality: Polyclonal

Application:	WB 1:500-1:2000
Reactivity:	Human,Mouse
Purification:	The antiserum was purified by peptide affinity chromatography using SulfoLink™ Coupling Resin (Thermo Fisher Scientific).
Specificity:	GATA3 Ab detects endogenous levels of GATA3.
Immunogen:	A synthesized peptide derived from human GATA3.
Uniprot:	P23771
Subcellular Location:	Nucleus.
Tissue Specificity:	T-cells and endothelial cells.
Similarity:	Binds DNA via the 2 GATA-type zinc fingers. Each zinc finger may bind either adjacent sites in a palindromic motif, or a different DNA molecule allowing looping and long-range gene regulation.The YxKxHxxxRP motif is critical for DNA-binding and function.
Storage Condition and Buffer:	Rabbit IgG in phosphate buffered saline , pH 7.4, 150mM NaCl, 0.02% sodium azide and 50% glycerol.Store at -20 °C.Stable for 12 months from date of receipt.



Western blot analysis of extracts from Hela cells, using GATA3 Ab. The lane on the left was treated with blocking peptide.

Observed bands: 42 kDa.



Western blot analysis of GATA3 in lysates of Jurkat , using GATA3 Ab(AF7771).

**IMPORTANT:** For western blot, incubate membrane with diluted primary Ab in 5% w/v milk , 1X TBS, 0.1% Tween@20 at 4°C with gentle shaking, overnight.

For Research Use Only. Not for use in diagnostic and therapeutic procedures. Not for resale without express authorization.