

GATA2 Ab

Cat.#: AF7769
Size: 50ul,100ul,200ul

Concn.: 1mg/ml
Source: Rabbit

Mol.Wt.: 49kDa
Clonality: Polyclonal

Application: WB 1:500-1:2000

Reactivity: Human,Monkey

Purification: The antiserum was purified by peptide affinity chromatography using SulfoLink™ Coupling Resin (Thermo Fisher Scientific).

Specificity: GATA2 Ab detects endogenous levels of GATA2.

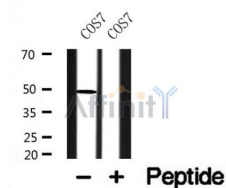
Immunogen: A synthesized peptide derived from human GATA2.

Uniprot: P23769

Subcellular Location: Nucleus.

Tissue Specificity: Endothelial cells.

Storage Condition and Buffer: Rabbit IgG in phosphate buffered saline , pH 7.4, 150mM NaCl, 0.02% sodium azide and 50% glycerol.Store at -20 °C.Stable for 12 months from date of receipt.



Western blot analysis of GATA2 in lysates of COS7 , using GATA2 Ab(AF7769).

IMPORTANT: For western blot, incubate membrane with diluted primary Ab in 5% w/v milk , 1X TBS, 0.1% Tween@20 at 4°C with gentle shaking, overnight.

For Research Use Only. Not for use in diagnostic and therapeutic procedures. Not for resale without express authorization.