

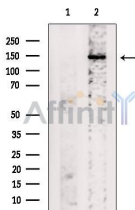
ABCB11 Ab

Cat.#: AF7593
Size: 50ul,100ul,200ul

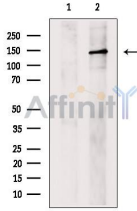
Concn.: 1mg/ml
Source: Rabbit

Mol.Wt.: 146kDa
Clonality: Polyclonal

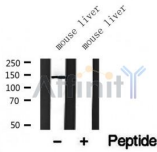
Application:	WB 1:500-1:2000, IF/ICC 1:100-1:500
Reactivity:	Human,Mouse,Rat
Purification:	The antiserum was purified by peptide affinity chromatography using SulfoLink™ Coupling Resin (Thermo Fisher Scientific).
Specificity:	ABCB11 Ab detects endogenous levels of ABCB11.
Immunogen:	A synthesized peptide derived from human ABCB11.
Uniprot:	O95342
Subcellular Location:	Membrane.
Tissue Specificity:	Expressed predominantly, if not exclusively in the liver, where it was further localized to the canalicular microvilli and to subcanalicular vesicles of the hepatocytes by in situ.
Similarity:	Multifunctional polypeptide with two homologous halves, each containing a hydrophobic membrane-anchoring domain and an ATP binding cassette (ABC) domain.Belongs to the ABC transporter superfamily. ABCB family. Multidrug resistance exporter (TC 3.A.1.201) subfamily. [View classification]
Storage Condition and Buffer:	Rabbit IgG in phosphate buffered saline , pH 7.4, 150mM NaCl, 0.02% sodium azide and 50% glycerol.Store at -20 °C.Stable for 12 months from date of receipt.



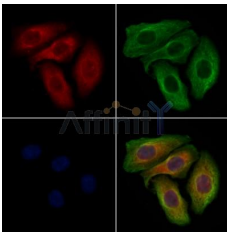
Western blot analysis of extracts from Rat heart, using ABCB11 Ab. The lane on the left was treated with blocking peptide.



Western blot analysis of extracts from MCF7, using ABCB11 Ab. The lane on the left was treated with blocking peptide.



Western blot analysis of extracts from mouse liver tissue sample, using ABCB11 Ab(AF7593).



AF7593 staining HeLa cells by IF/ICC. The samples were fixed with PFA and permeabilized in 0.1% Triton X-100, then blocked in 10% serum for 45 minutes at 25°C. Samples were then incubated with primary Ab(AF7593 1:200) and mouse anti-beta tubulin Ab(T0023 1:200) for 1 hour at 37°C. An AlexaFluor594 conjugated goat anti-rabbit IgG(H+L) Ab(Red) and an AlexaFluor488 conjugated goat anti-mouse IgG(H+L) Ab(Green) were used as the secondary Ab.

IMPORTANT: For western blot, incubate membrane with diluted primary Ab in 5% w/v milk, 1X TBS, 0.1% Tween@20 at 4°C with gentle shaking, overnight.

For Research Use Only. Not for use in diagnostic and therapeutic procedures. Not for resale without express authorization.