

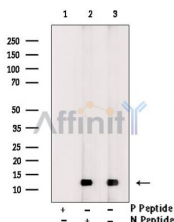
## Phospho-4E-BP1 (Thr45) Ab

Cat.#: AF7376  
Size: 100ul,200ul

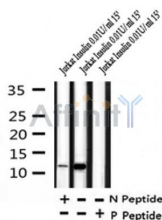
Concn.: 1mg/ml  
Source: Rabbit

Mol.Wt.: 12kDa  
Clonality: Polyclonal

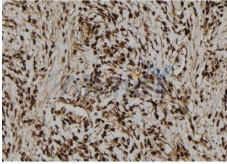
Application:	WB 1:500-1:2000, IHC 1:50-1:200
Reactivity:	Human,Mouse,Rat
Purification:	The Ab is from purified rabbit serum by affinity purification via sequential chromatography on phospho- and non-phospho-peptide affinity columns.
Specificity:	Phospho-4E-BP1 (Thr45) Ab detects endogenous levels of 4E-BP1 only when phosphorylated at Thr45.
Immunogen:	A synthesized peptide derived from human 4E-BP1 around the phosphorylation site of Thr45.
Uniprot:	Q13541
Similarity:	The TOS motif mediates interaction with RPTOR, leading to promote phosphorylation by mTORC1 complex.Belongs to the eIF4E-binding protein family.
Storage Condition and Buffer:	Rabbit IgG in phosphate buffered saline , pH 7.4, 150mM NaCl, 0.02% sodium azide and 50% glycerol.Store at -20 °C.Stable for 12 months from date of receipt.



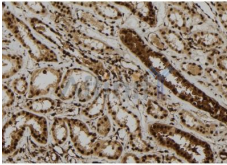
Western blot analysis of extracts from Jurkat cells treated with 0.01U/ml insulin for 15 minutes, using Phospho-4E-BP1 (Thr45) Ab. Lane 1 was treated with phospho-blocking peptide, Lane 2 with non-phospho-blocking peptide, and Lane 3 is a control.



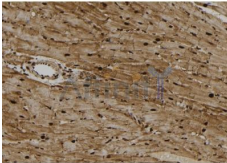
Western blot analysis of Phospho-4E-BP1 (Thr45) in lysates of Jurkat cells treated with 0.01U/ml insulin for 15 minutes, using Phospho-4E-BP1 (Thr45) Ab (AF7376).



AF7376 at 1/100 staining human gastric cancer tissue sections by IHC-P. The tissue was formaldehyde fixed and a heat mediated antigen retrieval step in citrate buffer was performed. The tissue was then blocked and incubated with the Ab for 1.5 hours at 22°C. An HRP conjugated goat anti-rabbit Ab was used as the secondary.



AF7376 at 1/100 staining human kidney tissue sections by IHC-P. The tissue was formaldehyde fixed and a heat mediated antigen retrieval step in citrate buffer was performed. The tissue was then blocked and incubated with the Ab for 1.5 hours at 22°C. An HRP conjugated goat anti-rabbit Ab was used as the secondary.



AF7376 at 1/100 staining rat heart tissue sections by IHC-P. The tissue was formaldehyde fixed and a heat mediated antigen retrieval step in citrate buffer was performed. The tissue was then blocked and incubated with the Ab for 1.5 hours at 22°C. An HRP conjugated goat anti-rabbit Ab was used as the secondary.

**IMPORTANT:** For western blot, incubate membrane with diluted primary Ab in 5% w/v milk, 1X TBS, 0.1% Tween@20 at 4°C with gentle shaking, overnight.

For Research Use Only. Not for use in diagnostic and therapeutic procedures. Not for resale without express authorization.