

Phospho-eIF4G (Ser1147) Ab

Cat.#: AF7349
Size: 100ul, 200ul

Concn.: 1mg/ml
Source: Rabbit

Mol.Wt.: 220kDa
Clonality: Polyclonal

Application: WB 1:500-1:2000

Reactivity: Human, Mouse, Rat

Purification: The Ab is from purified rabbit serum by affinity purification via sequential chromatography on phospho- and non-phospho-peptide affinity columns.

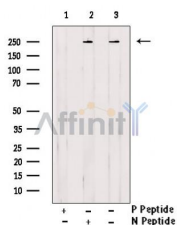
Specificity: Phospho-eIF4G (Ser1147) Ab detects endogenous levels of eIF4G only when phosphorylated at Ser1147.

Immunogen: A synthesized peptide derived from human eIF4G around the phosphorylation site of Ser1147.

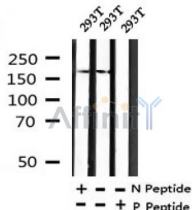
Uniprot: Q04637

Similarity: Belongs to the eukaryotic initiation factor 4G family.

Storage Condition and Buffer: Rabbit IgG in phosphate buffered saline, pH 7.4, 150mM NaCl, 0.02% sodium azide and 50% glycerol. Store at -20 °C. Stable for 12 months from date of receipt.



Western blot analysis of extracts from 293T, using Phospho-eIF4G (Ser1147) Ab. Lane 1 was treated with phospho-blocking peptide, Lane 2 was treated with non-phospho-blocking peptide.



Western blot analysis of Phospho-eIF4G (Ser1147) in lysates of 293T, using Phospho-eIF4G (Ser1147) Ab (AF7349).

IMPORTANT: For western blot, incubate membrane with diluted primary Ab in 5% w/v milk, 1X TBS, 0.1% Tween@20 at 4°C with gentle shaking, overnight.



Affinity Biosciences

website: www.affbiotech.com

order: order@affbiotech.com

For Research Use Only. Not for use in diagnostic and therapeutic procedures. Not for resale without express authorization.