

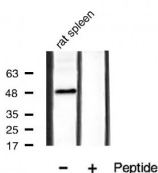
Phospho-GATA3 (Ser308) Ab

Cat.#: AF3233
Size: 100ul,200ul

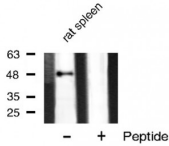
Concn.: 1mg/ml
Source: Rabbit

Mol.Wt.: 47kDa
Clonality: Polyclonal

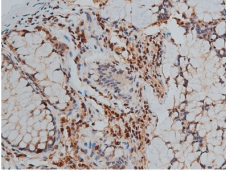
Application:	WB 1:500-1:2000 IF/ICC 1:100-1:500
Reactivity:	Human,Mouse
Purification:	The Ab is from purified rabbit serum by affinity purification via sequential chromatography on phospho- and non-phospho-peptide affinity columns.
Specificity:	Phospho-GATA3 (Ser308) Ab detects endogenous levels of GATA3 only when phosphorylated at Serine 308.
Immunogen:	A synthesized peptide derived from human GATA3 around the phosphorylation site of Serine 308.
Uniprot:	P23771
Description:	GATA3 is a transcriptional activator which binds to the enhancer of the T cell receptor alpha and delta genes. Binds to the consensus sequence 5'-AGATAG-3'.
Subcellular Location:	Nucleus.
Tissue Specificity:	T-cells and endothelial cells.
Similarity:	Binds DNA via the 2 GATA-type zinc fingers. Each zinc finger may bind either adjacent sites in a palindromic motif, or a different DNA molecule allowing looping and long-range gene regulation.The YxKxHxxxRP motif is critical for DNA-binding and function.
Storage Condition and Buffer:	Rabbit IgG in phosphate buffered saline , pH 7.4, 150mM NaCl, 0.02% sodium azide and 50% glycerol.Store at -20 °C.Stable for 12 months from date of receipt.



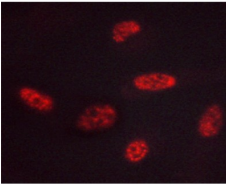
Western blot analysis of GATA3 phosphorylation expression in rat spleen tissue lysates, The lane on the right is treated with the antigen-specific peptide.



Western blot analysis of GATA3 phosphorylation expression in rat spleen tissue lysates, The lane on the right is treated with the antigen-specific peptide.



AF3233 at 1/50 staining human colon cancer tissue sections by IHC-P. The tissue was formaldehyde fixed and a heat mediated antigen retrieval step in citrate buffer was performed. The tissue was then blocked and incubated with the Ab for 1.5 hours at 22°C. An HRP conjugated goat anti-rabbit Ab was used as the secondary.



AF3233 staining HUVEC cells by ICC/IF. Cells were fixed with PFA and permeabilized in 0.1% saponin prior to blocking in 10% serum for 45 minutes at 37°C. The primary Ab was diluted 1/400 and incubated with the sample for 1 hour at 37°C. A Alexa Fluor 594 conjugated goat polyclonal to rabbit IgG (H+L), diluted 1/600 was used as secondary Ab.

IMPORTANT: For western blot, incubate membrane with diluted primary Ab in 5% w/v milk, 1X TBS, 0.1% Tween@20 at 4°C with gentle shaking, overnight.

For Research Use Only. Not for use in diagnostic and therapeutic procedures. Not for resale without express authorization.