

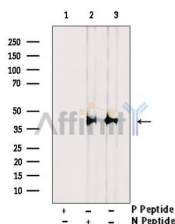
Phospho-I kappaB alpha (Tyr42) Ab

Cat.#: AF7276
Size: 100ul,200ul

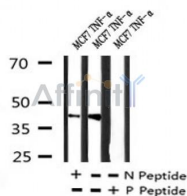
Concn.: 1mg/ml
Source: Rabbit

Mol.Wt.: 39kDa
Clonality: Polyclonal

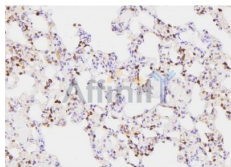
Application:	WB 1:500-1:2000, IHC 1:50-1:200
Reactivity:	Human,Mouse,Rat
Purification:	The Ab is from purified rabbit serum by affinity purification via sequential chromatography on phospho- and non-phospho-peptide affinity columns.
Specificity:	Phospho-I kappaB- alpha (Tyr42) Ab detects endogenous levels of I kappaB- alpha only when phosphorylated at Tyr42.
Immunogen:	A synthesized peptide derived from human I kappaB- alpha around the phosphorylation site of Tyr42.
Uniprot:	P25963
Subcellular Location:	Cytoplasm. Nucleus. Shuttles between the nucleus and the cytoplasm by a nuclear localization signal (NLS) and a CRM1-dependent nuclear export.
Tissue Specificity:	Induced in adherent monocytes.
Similarity:	Belongs to the NF-kappa-B inhibitor family.
Storage Condition and Buffer:	Rabbit IgG in phosphate buffered saline , pH 7.4, 150mM NaCl, 0.02% sodium azide and 50% glycerol.Store at -20 °C.Stable for 12 months from date of receipt.



Western blot analysis of extracts from MCF7 TNF-r, using Phospho-I kappaB alpha (Tyr42) Ab. Lane1 was treated with phospho-blocking peptide, Lane2 was treated with non-phospho-blocking peptide.



Western blot analysis of Phospho-I kappaB alpha (Tyr42) in lysates of MCF7 TNF-r, using Phospho-I kappaB alpha (Tyr42) Ab(AF7276).



AF7276 at 1/100 staining rat lung tissue sections by IHC-P. The tissue was formaldehyde fixed and a heat mediated antigen retrieval step in citrate buffer was performed. The tissue was then blocked and incubated with the Ab for 1.5 hours at 22°C. An HRP conjugated goat anti-rabbit Ab was used as the secondary.

IMPORTANT: For western blot, incubate membrane with diluted primary Ab in 5% w/v milk, 1X TBS, 0.1% Tween@20 at 4°C with gentle shaking, overnight.

For Research Use Only. Not for use in diagnostic and therapeutic procedures. Not for resale without express authorization.