

Phospho-GATA2 (Ser401) Ab

Cat.#: AF7270
Size: 100ul, 200ul

Concn.: 1mg/ml
Source: Rabbit

Mol.Wt.: 49kDa
Clonality: Polyclonal

Application: WB 1:500-1:2000, IHC 1:50-1:200

Reactivity: Human, Mouse, Rat

Purification: The Ab is from purified rabbit serum by affinity purification via sequential chromatography on phospho- and non-phospho-peptide affinity columns.

Specificity: Phospho-GATA2 (Ser401) Ab detects endogenous levels of GATA2 only when phosphorylated at Ser401.

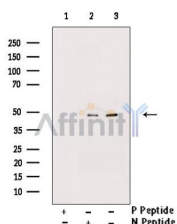
Immunogen: A synthesized peptide derived from human GATA2 around the phosphorylation site of Ser401.

Uniprot: P23769

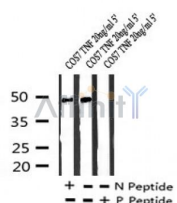
Subcellular Location: Nucleus.

Tissue Specificity: Endothelial cells.

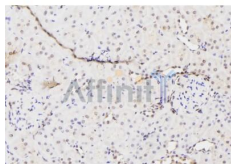
Storage Condition and Buffer: Rabbit IgG in phosphate buffered saline, pH 7.4, 150mM NaCl, 0.02% sodium azide and 50% glycerol. Store at -20 °C. Stable for 12 months from date of receipt.



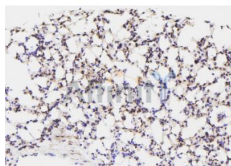
Western blot analysis of extracts from COS7 TNF 20ng/ml 5', using Phospho-GATA2 (Ser401) Ab. Lane 1 was treated with phospho-blocking peptide, Lane 2 was treated with non-phospho-blocking peptide.



Western blot analysis of Phospho-GATA2 (Ser401) in lysates of COS7 TNF 20ng/ml 5', using Phospho-GATA2 (Ser401) Ab (AF7270).



AF7270 at 1/100 staining rat kidney tissue sections by IHC-P. The tissue was formaldehyde fixed and a heat mediated antigen retrieval step in citrate buffer was performed. The tissue was then blocked and incubated with the Ab for 1.5 hours at 22°C. An HRP conjugated goat anti-rabbit Ab was used as the secondary.



AF7270 at 1/100 staining mouse lung tissue sections by IHC-P. The tissue was formaldehyde fixed and a heat mediated antigen retrieval step in citrate buffer was performed. The tissue was then blocked and incubated with the Ab for 1.5 hours at 22°C. An HRP conjugated goat anti-rabbit Ab was used as the secondary.

IMPORTANT: For western blot, incubate membrane with diluted primary Ab in 5% w/v milk , 1X TBS, 0.1% Tween@20 at 4°C with gentle shaking, overnight.

For Research Use Only. Not for use in diagnostic and therapeutic procedures. Not for resale without express authorization.