

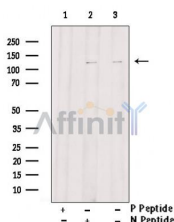
Phospho-CDH1 (Tyr754) Ab

Cat.#: AF7218
Size: 100ul,200ul

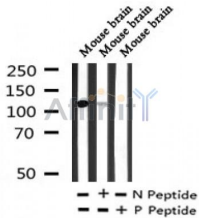
Concn.: 1mg/ml
Source: Rabbit

Mol.Wt.: 120kDa
Clonality: Polyclonal

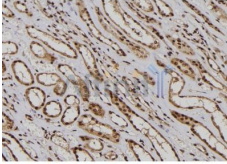
Application:	WB 1:500-1:2000, IHC 1:50-1:200
Reactivity:	Human,Mouse,Rat
Purification:	The Ab is from purified rabbit serum by affinity purification via sequential chromatography on phospho- and non-phospho-peptide affinity columns.
Specificity:	Phospho-CDH1 (Tyr754) Ab detects endogenous levels of CDH1 only when phosphorylated at Tyr754.
Immunogen:	A synthesized peptide derived from human CDH1 around the phosphorylation site of Tyr754.
Uniprot:	P12830
Subcellular Location:	Cell junction. Cell membrane. Endosome. Golgi apparatus > trans-Golgi network. Colocalizes with DLGAP5 at sites of cell-cell contact in intestinal epithelial cells. Anchored to actin microfilaments through association with alpha-, beta- and gamma-catenin. Sequential proteolysis induced by apoptosis or calcium influx, results in translocation from sites of cell-cell contact to the cytoplasm. Colocalizes with RAB11A endosomes during its transport from the Golgi apparatus to the plasma membrane.
Tissue Specificity:	Non-neural epithelial tissues.
Similarity:	Three calcium ions are usually bound at the interface of each cadherin domain and rigidify the connections, imparting a strong curvature to the full-length ectodomain.
Storage Condition and Buffer:	Rabbit IgG in phosphate buffered saline , pH 7.4, 150mM NaCl, 0.02% sodium azide and 50% glycerol.Store at -20 °C.Stable for 12 months from date of receipt.



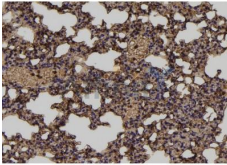
Western blot analysis of extracts from Mouse brain tissue, using Phospho-CDH1 (Tyr754) Ab. Lane1 was treated with phospho-blocking peptide, Lane2 was treated with non-phospho-blocking peptide.



Western blot analysis of extracts of Mouse brain tissue sample, using Phospho-CDH1 (Tyr754) Ab(AF7218).



AF7218 at 1/100 staining human kidney tissue sections by IHC-P. The tissue was formaldehyde fixed and a heat mediated antigen retrieval step in citrate buffer was performed. The tissue was then blocked and incubated with the Ab for 1.5 hours at 22°C. An HRP conjugated goat anti-rabbit Ab was used as the secondary.



AF7218 at 1/100 staining mouse lung tissue sections by IHC-P. The tissue was formaldehyde fixed and a heat mediated antigen retrieval step in citrate buffer was performed. The tissue was then blocked and incubated with the Ab for 1.5 hours at 22°C. An HRP conjugated goat anti-rabbit Ab was used as the secondary.

IMPORTANT: For western blot, incubate membrane with diluted primary Ab in 5% w/v milk, 1X TBS, 0.1% Tween@20 at 4°C with gentle shaking, overnight.

For Research Use Only. Not for use in diagnostic and therapeutic procedures. Not for resale without express authorization.