

## MRPL28 Ab

Cat.#: DF9105  
Size: 100ul, 200ul

Concn.: 1mg/ml  
Source: Rabbit

Mol.Wt.: 30kDa  
Clonality: Polyclonal

Application: WB 1:1000-3000 IHC 1:200

Reactivity: Human, Mouse

Purification: The antiserum was purified by peptide affinity chromatography using SulfoLink™ Coupling Resin (Thermo Fisher Scientific).

Specificity: MRPL28 Ab detects endogenous levels of total MRPL28.

Immunogen: A synthesized peptide derived from human MRPL28.

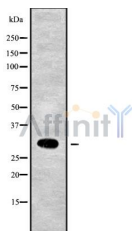
Uniprot: Q13084

Subcellular Location: Mitochondrion.

Tissue Specificity: Found in a variety of normal tissues including spleen, testes, thymus, liver, kidney, brain, adrenal, lung and retinal tissue.

Similarity: Belongs to the bacterial ribosomal protein bL28 family.

Storage Condition and Buffer: Rabbit IgG in phosphate buffered saline , pH 7.4, 150mM NaCl, 0.02% sodium azide and 50% glycerol. Store at -20 °C. Stable for 12 months from date of receipt.



Western blot analysis of MRPL28 using COS7 whole cell lysates



DF9105 at 1/100 staining Human brain cancer tissue by IHC-P. The sample was formaldehyde fixed and a heat mediated antigen retrieval step in citrate buffer was performed. The sample was then blocked and incubated with the Ab for 1.5 hours at 22°C. An HRP conjugated goat anti-rabbit Ab was used as the secondary.

**IMPORTANT:** For western blot, incubate membrane with diluted primary Ab

---

in 5% w/v milk , 1X TBS, 0.1% Tween@20 at 4°C with gentle shaking,  
overnight.

---

For Research Use Only. Not for use in diagnostic and therapeutic  
procedures. Not for resale without express authorization.