

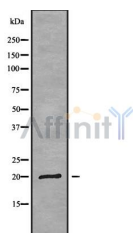
## MRPL17 Ab

Cat.#: DF9102  
Size: 100ul,200ul

Concn.: 1mg/ml  
Source: Rabbit

Mol.Wt.: 20 kDa  
Clonality: Polyclonal

Application:	WB 1:1000-3000
Reactivity:	Human
Purification:	The antiserum was purified by peptide affinity chromatography using SulfoLink™ Coupling Resin (Thermo Fisher Scientific).
Specificity:	MRPL17 Ab detects endogenous levels of total MRPL17.
Immunogen:	A synthesized peptide derived from human MRPL17.
Uniprot:	Q9NRX2
Subcellular Location:	Mitochondrion
Tissue Specificity:	Detected in adrenal gland, mammary gland and adipose tissue.
Similarity:	Belongs to the bacterial ribosomal protein bL17 family.
Storage Condition and Buffer:	Rabbit IgG in phosphate buffered saline , pH 7.4, 150mM NaCl, 0.02% sodium azide and 50% glycerol.Store at -20 °C.Stable for 12 months from date of receipt.



Western blot analysis of MRPL17 using HuvEc whole cell lysates

**IMPORTANT:** For western blot, incubate membrane with diluted primary Ab in 5% w/v milk , 1X TBS, 0.1% Tween@20 at 4°C with gentle shaking, overnight.

For Research Use Only. Not for use in diagnostic and therapeutic procedures. Not for resale without express authorization.