

MOGAT3 Ab

Cat.#: DF9099
Size: 100ul,200ul

Concn.: 1mg/ml
Source: Rabbit

Mol.Wt.: 39 kDa
Clonality: Polyclonal

Application: WB 1:1000-3000

Reactivity: Human

Purification: The antiserum was purified by peptide affinity chromatography using SulfoLink™ Coupling Resin (Thermo Fisher Scientific).

Specificity: MOGAT3 Ab detects endogenous levels of total MOGAT3.

Immunogen: A synthesized peptide derived from human MOGAT3.

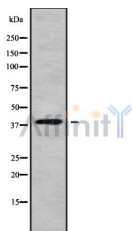
Uniprot: Q86VF5

Subcellular Location: Endoplasmic reticulum membrane.

Tissue Specificity: Selectively expressed in the digestive system. Highly expressed in the ileum, and at lower level in jejunum, duodenum, colon, cecum and the rectum. Not expressed in the stomach and the esophagus and trachea. Expressed at very low level in liver.

Similarity: Belongs to the diacylglycerol acyltransferase family.

Storage Condition and Buffer: Rabbit IgG in phosphate buffered saline , pH 7.4, 150mM NaCl, 0.02% sodium azide and 50% glycerol.Store at -20 °C.Stable for 12 months from date of receipt.



Western blot analysis of MOGAT3 using K562 whole cell lysates

IMPORTANT: For western blot, incubate membrane with diluted primary Ab in 5% w/v milk , 1X TBS, 0.1% Tween@20 at 4°C with gentle shaking, overnight.

For Research Use Only. Not for use in diagnostic and therapeutic procedures. Not for resale without express authorization.