

## TF3C3 Ab

Cat.#: DF8728  
Size: 100ul,200ul

Concn.: 1mg/ml  
Source: Rabbit

Mol.Wt.: 101 kDa  
Clonality: Polyclonal

Application: WB 1:1000-3000, IF/ICC 1:100-1:500

Reactivity: Human, Mouse

Purification: The antiserum was purified by peptide affinity chromatography using SulfoLink™ Coupling Resin (Thermo Fisher Scientific).

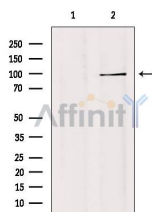
Specificity: TF3C3 Ab detects endogenous levels of total TF3C3.

Immunogen: A synthesized peptide derived from human TF3C3.

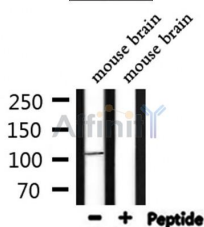
Uniprot: Q9Y5Q9

Subcellular Location: Nucleus.

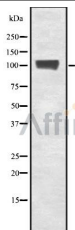
Storage Condition and Buffer: Rabbit IgG in phosphate buffered saline , pH 7.4, 150mM NaCl, 0.02% sodium azide and 50% glycerol. Store at -20 °C. Stable for 12 months from date of receipt.



Western blot analysis of extracts from 293, using TF3C3 Ab. Lane 1 was treated with the blocking peptide.



Western blot analysis of extracts from mouse brain, using TF3C3 Ab.



Western blot analysis of TF3C3 using COS7 whole cell lysates



DF8728 staining HeLa by IF/ICC. The sample were fixed with PFA and permeabilized in 0.1% Triton X-100, then blocked in 10% serum for 45 minutes at 25°C. The primary Ab was diluted at 1/200 and incubated with the sample for 1 hour at 37°C. An Alexa Fluor 594 conjugated goat anti-rabbit IgG (H+L) Ab, diluted at 1/600, was used as the secondary Ab.

**IMPORTANT:** For western blot, incubate membrane with diluted primary Ab in 5% w/v milk, 1X TBS, 0.1% Tween@20 at 4°C with gentle shaking, overnight.

For Research Use Only. Not for use in diagnostic and therapeutic procedures. Not for resale without express authorization.