

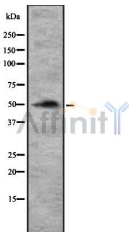
ENT1 Ab

Cat.#: DF8542
Size: 100ul,200ul

Concn.: 1mg/ml
Source: Rabbit

Mol.Wt.: 50 kDa
Clonality: Polyclonal

Application:	WB 1:1000-3000
Reactivity:	Human,Mouse,Rat
Purification:	The antiserum was purified by peptide affinity chromatography using SulfoLink™ Coupling Resin (Thermo Fisher Scientific).
Specificity:	ENT1 Ab detects endogenous levels of total ENT1.
Immunogen:	A synthesized peptide derived from human ENT1.
Uniprot:	Q99808
Subcellular Location:	Basolateral cell membrane. Apical cell membrane. Predominantly localized in the basolateral membrane in polarised MDCK cells.
Tissue Specificity:	Detected in erythrocytes (at protein level). Expressed in heart, brain, mammary gland, erythrocytes and placenta, and also in fetal liver and spleen.
Similarity:	Belongs to the SLC29A/ENT transporter (TC 2.A.57) family. [View classification]
Storage Condition and Buffer:	Rabbit IgG in phosphate buffered saline , pH 7.4, 150mM NaCl, 0.02% sodium azide and 50% glycerol.Store at -20 °C.Stable for 12 months from date of receipt.



Western blot analysis of ENT1 using Jurkat whole cell lysates

IMPORTANT: For western blot, incubate membrane with diluted primary Ab in 5% w/v milk , 1X TBS, 0.1% Tween@20 at 4°C with gentle shaking, overnight.