

## BMP-8 Ab

Cat.#: DF8507  
Size: 100ul,200ul

Concn.: 1mg/ml  
Source: Rabbit

Mol.Wt.: 44 kDa  
Clonality: Polyclonal

Application: WB 1:1000-3000 IHC 1:200

Reactivity: Human, Mouse

Purification: The antiserum was purified by peptide affinity chromatography using SulfoLink™ Coupling Resin (Thermo Fisher Scientific).

Specificity: BMP-8 Ab detects endogenous levels of total BMP-8.

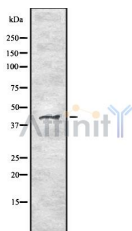
Immunogen: A synthesized peptide derived from human BMP-8.

Uniprot: P34820/Q7Z5Y6

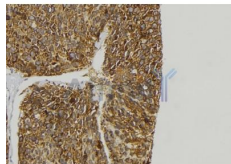
Subcellular Location: Secreted.

Similarity: Belongs to the TGF-beta family.

Storage Condition and Buffer: Rabbit IgG in phosphate buffered saline , pH 7.4, 150mM NaCl, 0.02% sodium azide and 50% glycerol. Store at -20 °C. Stable for 12 months from date of receipt.



Western blot analysis of BMP-8 using COS7 whole cell lysates



DF8507 at 1/100 staining Human pancreas tissue by IHC-P. The sample was formaldehyde fixed and a heat mediated antigen retrieval step in citrate buffer was performed. The sample was then blocked and incubated with the Ab for 1.5 hours at 22°C. An HRP conjugated goat anti-rabbit Ab was used as the secondary.

**IMPORTANT:** For western blot, incubate membrane with diluted primary Ab in 5% w/v milk , 1X TBS, 0.1% Tween@20 at 4°C with gentle shaking, overnight.



**Affinity Biosciences**

website: [www.affbiotech.com](http://www.affbiotech.com)

order: [order@affbiotech.com](mailto:order@affbiotech.com)

---

For Research Use Only. Not for use in diagnostic and therapeutic procedures. Not for resale without express authorization.