

ABAT Ab

Cat.#: DF8134
Size: 100ul,200ul

Concn.: 1mg/ml
Source: Rabbit

Mol.Wt.: 56 kDa
Clonality: Polyclonal

Application: WB 1:1000-3000, IF/ICC 1:200-1:500

Reactivity: Human,Mouse,Rat

Purification: The antiserum was purified by peptide affinity chromatography using SulfoLink™ Coupling Resin (Thermo Fisher Scientific).

Specificity: ABAT Ab detects endogenous levels of total ABAT.

Immunogen: A synthesized peptide derived from human ABAT.

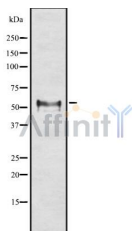
Uniprot: P80404

Subcellular Location: Mitochondrion matrix.

Tissue Specificity: Liver > pancreas > brain > kidney > heart > placenta.

Similarity: Belongs to the class-III pyridoxal-phosphate-dependent aminotransferase family.

Storage Condition and Buffer: Rabbit IgG in phosphate buffered saline , pH 7.4, 150mM NaCl, 0.02% sodium azide and 50% glycerol.Store at -20 °C.Stable for 12 months from date of receipt.



Western blot analysis of ABAT using NIH-3T3 whole cell lysates



DF8134 staining HepG2 by IF/ICC. The sample were fixed with PFA and permeabilized in 0.1% Triton X-100,then blocked in 10% serum for 45 minutes at 25°C. The primary Ab was diluted at 1/200 and incubated with the sample for 1 hour at 37°C. An Alexa Fluor 594 conjugated goat anti-rabbit IgG (H+L) Ab, diluted at 1/600, was used as the secondary Ab.

IMPORTANT: For western blot, incubate membrane with diluted primary Ab

in 5% w/v milk , 1X TBS, 0.1% Tween@20 at 4°C with gentle shaking,
overnight.

For Research Use Only. Not for use in diagnostic and therapeutic
procedures. Not for resale without express authorization.