

CDH4 Ab

Cat.#: DF8132
Size: 100ul,200ul

Concn.: 1mg/ml
Source: Rabbit

Mol.Wt.: 140 kDa
Clonality: Polyclonal

Application: WB 1:1000-3000

Reactivity: Human,Mouse

Purification: The antiserum was purified by peptide affinity chromatography using SulfoLink™ Coupling Resin (Thermo Fisher Scientific).

Specificity: CDH4 Ab detects endogenous levels of total CDH4.

Immunogen: A synthesized peptide derived from human CDH4.

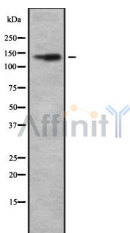
Uniprot: P55283

Subcellular Location: Plasma membrane;

Tissue Specificity: Expressed mainly in brain but also found in other tissues.

Similarity: Three calcium ions are usually bound at the interface of each cadherin domain and rigidify the connections, imparting a strong curvature to the full-length ectodomain.

Storage Condition and Buffer: Rabbit IgG in phosphate buffered saline , pH 7.4, 150mM NaCl, 0.02% sodium azide and 50% glycerol.Store at -20 °C.Stable for 12 months from date of receipt.



Western blot analysis of CDH4 using Jurkat whole cell lysates

IMPORTANT: For western blot, incubate membrane with diluted primary Ab in 5% w/v milk , 1X TBS, 0.1% Tween@20 at 4°C with gentle shaking, overnight.

For Research Use Only. Not for use in diagnostic and therapeutic procedures. Not for resale without express authorization.