

## eIF4G Ab

Cat.#: DF7764  
Size: 100ul,200ul

Concn.: 1mg/ml  
Source: Rabbit

Mol.Wt.: 220 kDa  
Clonality: Polyclonal

Application: WB 1:1000-3000

Reactivity: Human

Purification: The antiserum was purified by peptide affinity chromatography using SulfoLink™ Coupling Resin (Thermo Fisher Scientific).

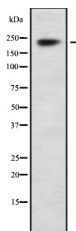
Specificity: eIF4G Ab detects endogenous levels of total eIF4G.

Immunogen: A synthesized peptide derived from human eIF4G.

Uniprot: Q04637

Similarity: Belongs to the eukaryotic initiation factor 4G family.

Storage Condition and Buffer: Rabbit IgG in phosphate buffered saline , pH 7.4, 150mM NaCl, 0.02% sodium azide and 50% glycerol.Store at -20 °C.Stable for 12 months from date of receipt.



Western blot analysis of eIF4G using HeLa whole lysates.

**IMPORTANT:** For western blot, incubate membrane with diluted primary Ab in 5% w/v milk , 1X TBS, 0.1% Tween@20 at 4°C with gentle shaking, overnight.

For Research Use Only. Not for use in diagnostic and therapeutic procedures. Not for resale without express authorization.