

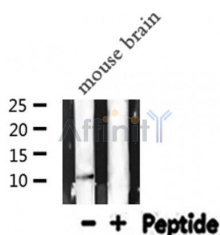
MCP-1 Ab

Cat.#: DF7577
Size: 100ul,200ul

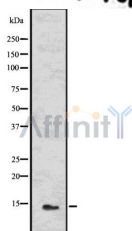
Concn.: 1mg/ml
Source: Rabbit

Mol.Wt.: 14 kDa
Clonality: Polyclonal

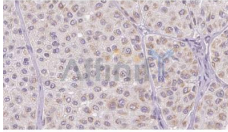
Application:	WB 1:1000-3000, IHC 1:200, IF/ICC 1:100-1:500
Reactivity:	Human,Mouse,Rat
Purification:	The antiserum was purified by peptide affinity chromatography using SulfoLink™ Coupling Resin (Thermo Fisher Scientific).
Specificity:	MCP-1 Ab detects endogenous levels of total MCP-1.
Immunogen:	A synthesized peptide derived from human MCP-1.
Uniprot:	P13500
Subcellular Location:	Secreted.
Tissue Specificity:	Expressed in the seminal plasma, endometrial fluid and follicular fluid (at protein level).
Similarity:	Belongs to the intercrine beta (chemokine CC) family.
Storage Condition and Buffer:	Rabbit IgG in phosphate buffered saline , pH 7.4, 150mM NaCl, 0.02% sodium azide and 50% glycerol.Store at -20 °C.Stable for 12 months from date of receipt.



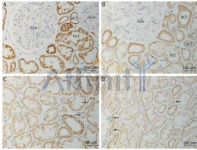
Western blot analysis of MCP-1 expression in Mouse brain lysates



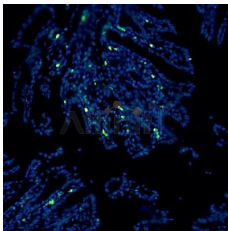
Western blot analysis of MCP-1 using HUVEC whole cell lysates



DF7577 at 1/100 staining Human melanoma tissue by IHC-P. The sample was formaldehyde fixed and a heat mediated antigen retrieval step in citrate buffer was performed. The sample was then blocked and incubated with the Ab for 1.5 hours at 22°C. An HRP conjugated goat anti-rabbit Ab was used as the secondary.



Urinary MCP-1, HMGB1 increased in calcium nephrolithiasis patients and the influence of hypercalciuria on the production of the two cytokines Yang Wang1 · Chun Sun1 · Chengyang Li1 · Yaoliang Deng1 · Guohua Zeng2 · Zhiwei Tao1 · Xiang Wang1 · Xiaofeng Guan1 · Yutong Zhao



IF/ICC analysis mouse intestinal tissue using MCP-1 Ab(Green). Blue: DAPI.

IMPORTANT: For western blot, incubate membrane with diluted primary Ab in 5% w/v milk , 1X TBS, 0.1% Tween@20 at 4°C with gentle shaking, overnight.

For Research Use Only. Not for use in diagnostic and therapeutic procedures. Not for resale without express authorization.