

## MCP1 Ab

Cat.#: DF7554  
Size: 100ul, 200ul

Concn.: 1mg/ml  
Source: Rabbit

Mol.Wt.: 14 kDa  
Clonality: Polyclonal

Application: WB 1:1000-3000 IHC 1:200

Reactivity: Human, Rat

Purification: The antiserum was purified by peptide affinity chromatography using SulfoLink™ Coupling Resin (Thermo Fisher Scientific).

Specificity: MCP1 Ab detects endogenous levels of total MCP1.

Immunogen: A synthesized peptide derived from human MCP1.

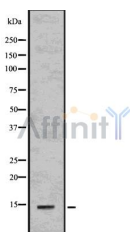
Uniprot: P13500

Subcellular Location: Secreted.

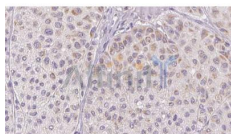
Tissue Specificity: Expressed in the seminal plasma, endometrial fluid and follicular fluid (at protein level).

Similarity: Belongs to the intercrine beta (chemokine CC) family.

Storage Condition and Buffer: Rabbit IgG in phosphate buffered saline , pH 7.4, 150mM NaCl, 0.02% sodium azide and 50% glycerol. Store at -20 °C. Stable for 12 months from date of receipt.



Western blot analysis of MCP1 using HUVEC whole cell lysates



DF7554 at 1/100 staining Human melanoma tissue by IHC-P. The sample was formaldehyde fixed and a heat mediated antigen retrieval step in citrate buffer was performed. The sample was then blocked and incubated with the Ab for 1.5 hours at 22°C. An HRP conjugated goat anti-rabbit Ab was used as the secondary.

**IMPORTANT:** For western blot, incubate membrane with diluted primary Ab

---

in 5% w/v milk , 1X TBS, 0.1% Tween@20 at 4°C with gentle shaking,  
overnight.

---

For Research Use Only. Not for use in diagnostic and therapeutic  
procedures. Not for resale without express authorization.