

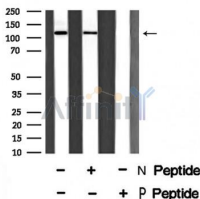
Phospho-CDH1 (Ser844) Ab

Cat.#: AF8365
 Size: 100ul,200ul

Concn.: 1mg/ml
 Source: Rabbit

Mol.Wt.: 120kDa
 Clonality: Polyclonal

Application:	WB 1:1000-3000
Reactivity:	Human,Mouse,Rat
Purification:	The Ab is from purified rabbit serum by affinity purification via sequential chromatography on phospho- and non-phospho-peptide affinity columns.
Specificity:	CDH1 (Phospho-Ser844) Ab detects endogenous levels of CDH1 only when phosphorylated at Ser844.
Immunogen:	A synthesized peptide derived from human CDH1 (Phospho-Ser844).
Uniprot:	P12830
Subcellular Location:	Cell junction. Cell membrane. Endosome. Golgi apparatus > trans-Golgi network. Colocalizes with DLGAP5 at sites of cell-cell contact in intestinal epithelial cells. Anchored to actin microfilaments through association with alpha-, beta- and gamma-catenin. Sequential proteolysis induced by apoptosis or calcium influx, results in translocation from sites of cell-cell contact to the cytoplasm. Colocalizes with RAB11A endosomes during its transport from the Golgi apparatus to the plasma membrane.
Tissue Specificity:	Non-neural epithelial tissues.
Similarity:	Three calcium ions are usually bound at the interface of each cadherin domain and rigidify the connections, imparting a strong curvature to the full-length ectodomain.
Storage Condition and Buffer:	Rabbit IgG in phosphate buffered saline , pH 7.4, 150mM NaCl, 0.02% sodium azide and 50% glycerol.Store at -20 °C.Stable for 12 months from date of receipt.



Western blot analysis of CDH1 (Phospho-Ser844) using PI3-kinase H2O2 treated COS7 whole cell lysates.

-/+ means absence or presence of N peptide (non-phospho peptide) and P peptide (phospho peptide).

IMPORTANT: For western blot, incubate membrane with diluted primary Ab in 5% w/v milk , 1X TBS, 0.1% Tween@20 at 4°C with gentle shaking, overnight.

For Research Use Only. Not for use in diagnostic and therapeutic procedures. Not for resale without express authorization.