

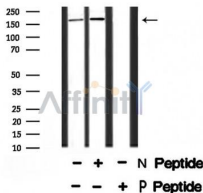
Phospho-PPARBP (Thr1032) Ab

Cat.#: AF8302
Size: 100ul,200ul

Concn.: 1mg/ml
Source: Rabbit

Mol.Wt.: 168kDa
Clonality: Polyclonal

Application:	WB 1:1000-3000, IF/ICC 1:100-1:500
Reactivity:	Human,Mouse
Purification:	The Ab is from purified rabbit serum by affinity purification via sequential chromatography on phospho- and non-phospho-peptide affinity columns.
Specificity:	PPARBP (Phospho-Thr1032) Ab detects endogenous levels of PPARBP only when phosphorylated at Thr1032.
Immunogen:	A synthesized peptide derived from human PPARBP (Phospho-Thr1032).
Uniprot:	Q15648
Subcellular Location:	Nucleus. A subset of the protein may enter the nucleolus subsequent to phosphorylation by MAPK1 or MAPK3.
Tissue Specificity:	Ubiquitously expressed.
Similarity:	Belongs to the Mediator complex subunit 1 family.
Storage Condition and Buffer:	Rabbit IgG in phosphate buffered saline , pH 7.4, 150mM NaCl, 0.02% sodium azide and 50% glycerol.Store at -20 °C.Stable for 12 months from date of receipt.



Western blot analysis of PPARBP (Phospho-Thr1032) using Na₃VO₄ treated K562 whole cell lysates.

-/+ means absence or presence of N peptide (non-phospho peptide) and P peptide (phospho peptide).



AF8302 staining HuvEc by IF/ICC. The sample were fixed with PFA and permeabilized in 0.1% Triton X-100, then blocked in 10% serum for 45 minutes at 25°C. The primary Ab was diluted at 1/200 and incubated with the sample for 1 hour at 37°C. An Alexa Fluor 594 conjugated goat anti-rabbit IgG (H+L) Ab, diluted at 1/600, was used as the secondary Ab.

IMPORTANT: For western blot, incubate membrane with diluted primary Ab in 5% w/v milk , 1X TBS, 0.1% Tween@20 at 4°C with gentle shaking, overnight.

For Research Use Only. Not for use in diagnostic and therapeutic procedures. Not for resale without express authorization.