

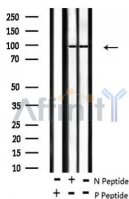
## Phospho-ZAK (Ser165) Ab

Cat.#: AF8195  
Size: 100ul,200ul

Concn.: 1mg/ml  
Source: Rabbit

Mol.Wt.: 91 KD  
Clonality: Polyclonal

Application:	WB 1:1000-3000
Reactivity:	Human,Mouse
Purification:	The Ab is from purified rabbit serum by affinity purification via sequential chromatography on phospho- and non-phospho-peptide affinity columns.
Specificity:	ZAK (Phospho-Ser165) Ab detects endogenous levels of ZAK only when phosphorylated at Ser165.
Immunogen:	A synthesized peptide derived from human ZAK (Phospho-Ser165).
Uniprot:	Q9NYL2
Subcellular Location:	Cytoplasm. Nucleus. Translocates to the nucleus upon ultraviolet B irradiation.
Tissue Specificity:	Ubiquitously expressed. Isoform 2 is the predominant form in all tissues examined, except for liver, in which isoform 1 is more highly expressed.
Similarity:	Belongs to the protein kinase superfamily. STE Ser/Thr protein kinase family. MAP kinase kinase kinase subfamily.
Storage Condition and Buffer:	Rabbit IgG in phosphate buffered saline , pH 7.4, 150mM NaCl, 0.02% sodium azide and 50% glycerol.Store at -20 °C.Stable for 12 months from date of receipt.



Western blot analysis of ZAK (Phospho-Ser165) using HeLa whole cell lysates.

-/+ means absence or presence of N peptide (non-phospho peptide) and P peptide (phospho peptide).

**IMPORTANT:** For western blot, incubate membrane with diluted primary Ab in 5% w/v milk , 1X TBS, 0.1% Tween@20 at 4°C with gentle shaking, overnight.



**Affinity Biosciences**  
website: [www.affbiotech.com](http://www.affbiotech.com)  
order: [order@affbiotech.com](mailto:order@affbiotech.com)

---

procedures. Not for resale without express authorization.