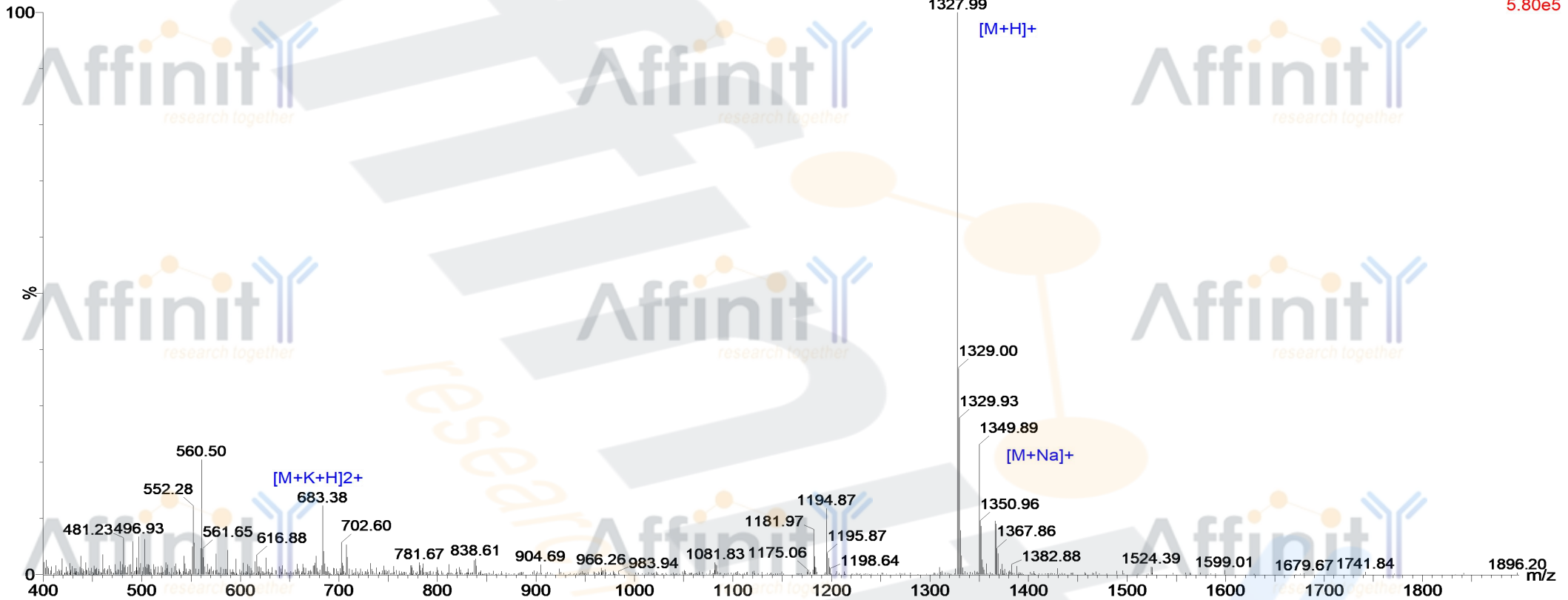


MASS SPECTROMETRY REPORT

18-Jul-2017
15:31:42

Probe: ESI
Cone: 50v
Desovation Temp :350
Capillary:3.00KV
Extractor: 5v
Gas Flow : 350
Scan ES+
5.80e5

170718-41 711 (13.142) Cm (709:712)



Sample Description

Analyzed date: 2014-07-18
Analyst: YU
Sample: D-12
M.W.: 1327.39
Lot. No.: P140714-SY546400

Instrument

Waters ZQ2000
Probe: ESI
Nebulizer Gas Flow: 1.5L/min
CDL: -20.0v
CDL Temp.: 250 °C
Block Temp.: 200 °C

Probe Bias: + 4.5kv
Detector: 1.5kv
T. Flow: 0.2ml/min
B. Conc.: 50% H₂O/50% ACN