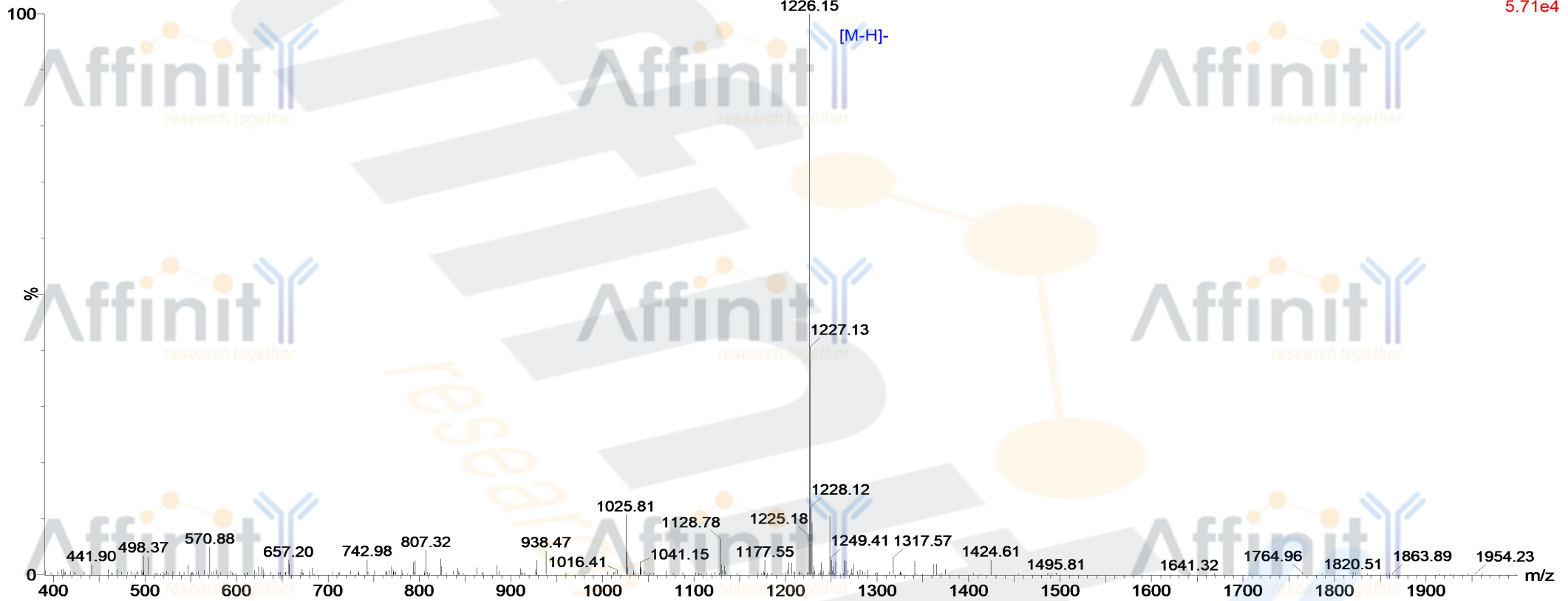


MASS SPECTROMETRY REPORT

13-Jul-2017
10:54:31

Probe: ESI
Cone: 50v
Desovation Temp :350
Capillary:3.00KV
Extractor: 5v
Gas Flow : 350
Scan ES-
5.71e4

170713-19- 28 (0.517) Cm (22:29)



Sample Description

Analyzed date: 2014-07-13
Analyst: YU
Sample: S-11P
M.W.: 1226.35
Lot. No.: P140705-CJ594033

Instrument

Waters ZQ2000
Probe: ESI
Nebulizer Gas Flow: 1.5L/min
CDL: -20.0v
CDL Temp.: 250 °C
Block Temp.: 200 °C

Waters ZQ2000

Probe Bias: + 4.5kv
Detector: 1.5kv
T. Flow: 0.2ml/min
B. Conc.: 50% H₂O/50% ACN