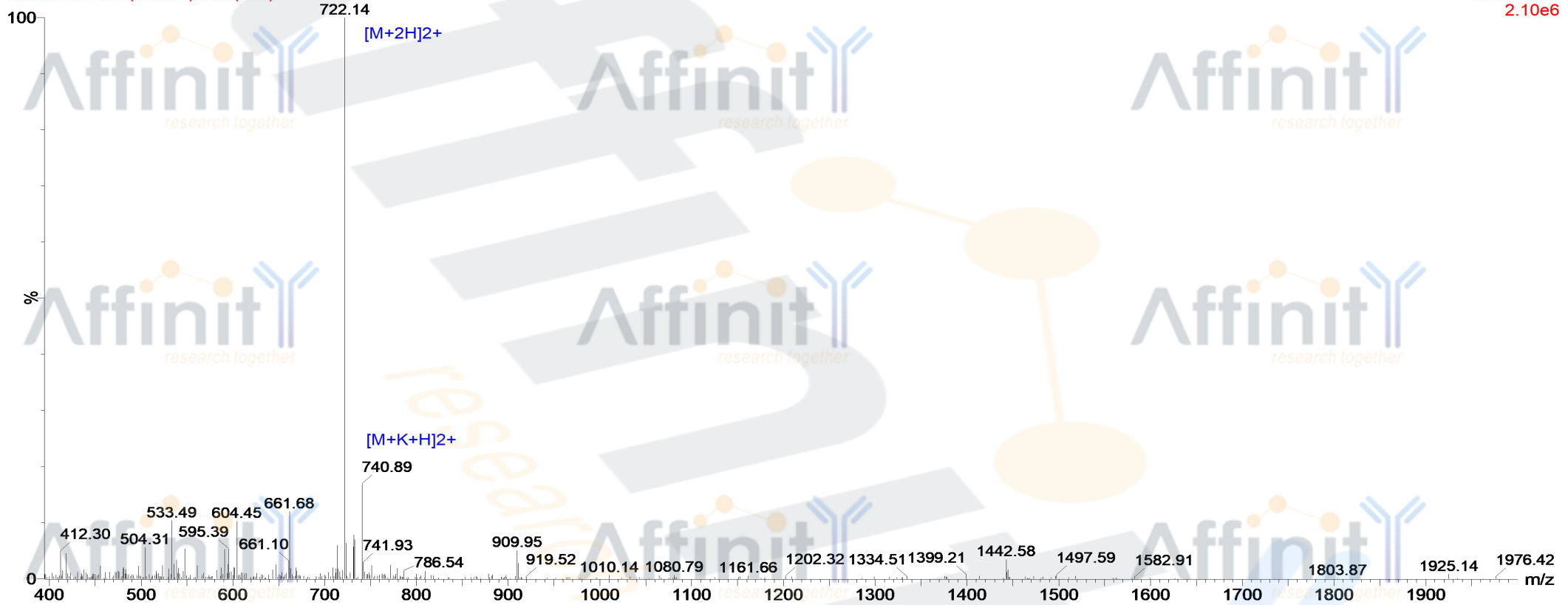


MASS SPECTROMETRY REPORT

28-Sep-2017
10:37:48

Probe: ESI
Cone: 50v
Desovation Temp :350
Capillary:3.00KV
Extractor: 5v
Gas Flow : 350
Scan ES+
2.10e6

170928-24 644 (11.903) Cm (644)



Sample Description

Analyzed date: 2014-09-28
Analyst: YU
Sample: C-13
M.W.: 1441.63
Lot. No.: P140921-CJ608415

Instrument

Waters ZQ2000
Probe: ESI
Nebulizer Gas Flow: 1.5L/min
CDL: -20.0v
CDL Temp.: 250 °C
Block Temp.: 200 °C

Waters ZQ2000

Probe Bias: + 4.5kv
Detector: 1.5kv
T. Flow: 0.2ml/min
B. Conc.: 50% H₂O/50% ACN