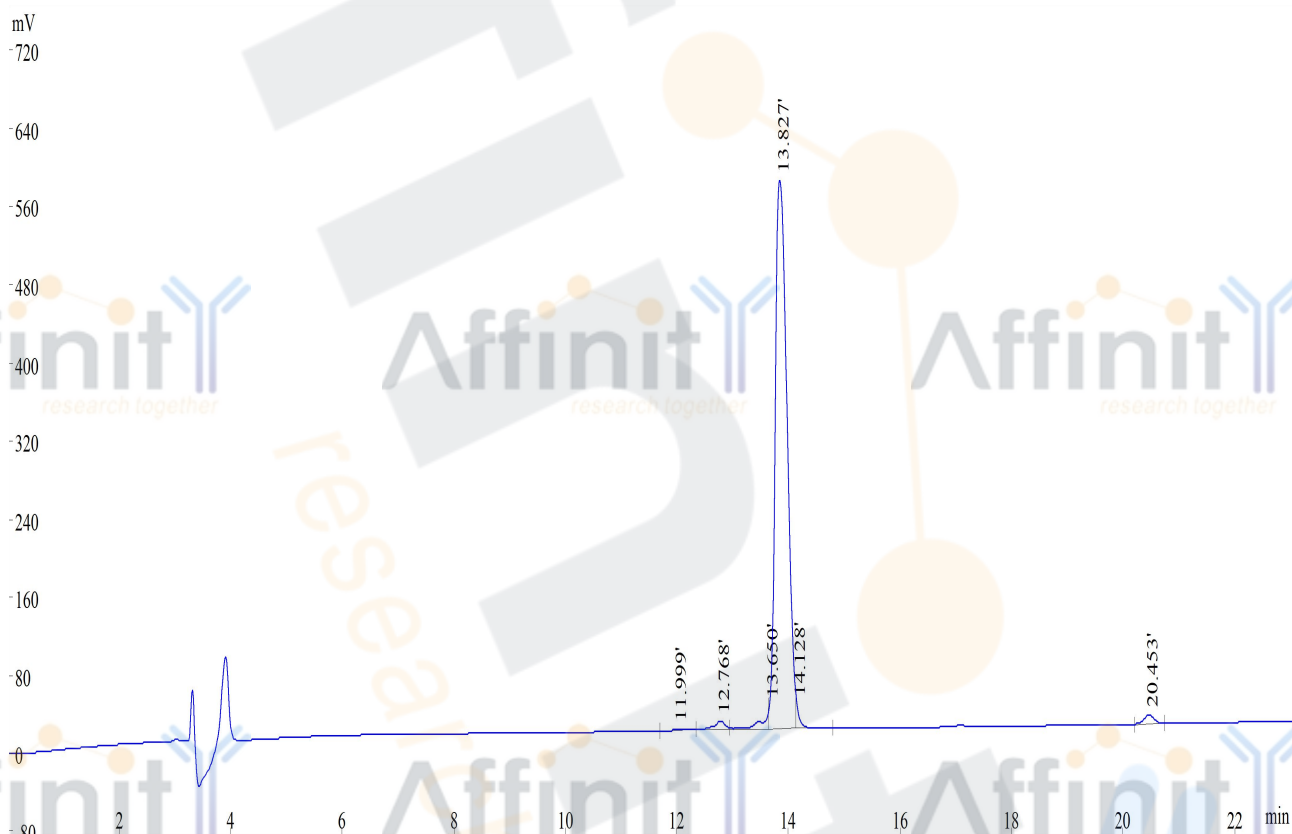


# HPLC REPORT

Sample: C-14 Analyzed date: 2014-09-29  
 Analyst: FS  
 Lot. No.: P140922-LL608482  
 Column: 4.6\*250mm, Welch CX-C18 5um  
 Solvent A: A: 0.1% Trifluoroacetic Acid in 100% Acetonitrile  
 Solvent B: B: 0.1% Trifluoroacetic Acid in 100% Water  
 Gradient:

	A	B
0.0min	12%	88%
25.0min	37%	63%
25.1min	100%	0%
30.0min	Stop	

Volume: 20µl  
 Wavelength: 220nm  
 Flow rate: 1.0ml/min



Rank	Time	Conc.	Area
1	11.999	0.2403	19668
2	12.768	1.411	115533
3	13.650	2.183	178665
4	13.827	93.99	7694629
5	14.128	0.9655	79036
6	20.453	1.208	98883

Total 100 8186414