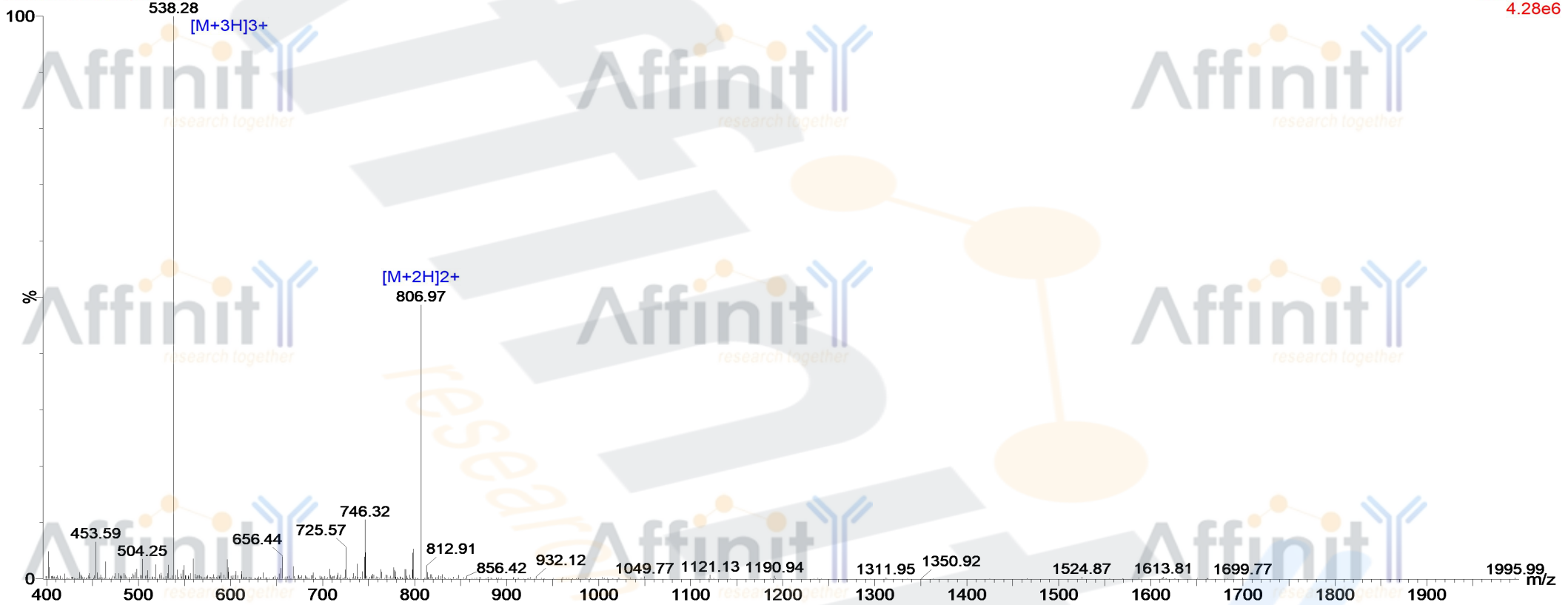


MASS SPECTROMETRY REPORT

20-Oct-2017
10:33:10

Probe: ESI
Cone: 50v
Desovation Temp :350
Capillary:3.00KV
Extractor: 5v
Gas Flow : 350
Scan ES+
4.28e6

171020-25 127 (2.347)



Sample Description

Analyzed date: 2014-10-20
Analyst: YU
Sample: C-14
M.W.: 1611.78
Lot. No.: P141012-SY608913

Instrument

Waters ZQ2000
Probe: ESI
Nebulizer Gas Flow: 1.5L/min
CDL: -20.0v
CDL Temp.: 250 °C
Block Temp.: 200 °C

Probe Bias: + 4.5kv
Detector: 1.5kv
T. Flow: 0.2ml/min
B. Conc.: 50%H2O/50% ACN