

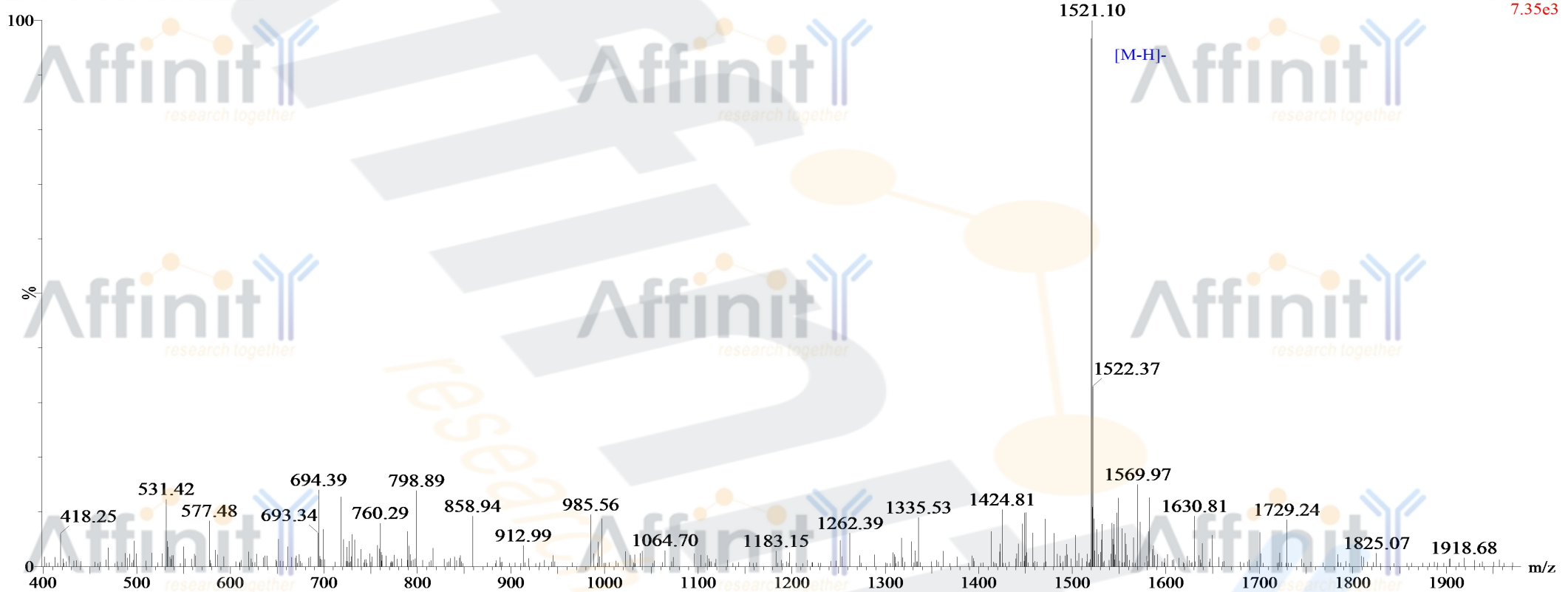
# MASS SPECTROMETRY REPORT

29-Sep-2017  
11:27:24

Probe: ESI  
Cone: 50v  
Desovation Temp :350

Capillary:3.00KV  
Extractor: 5v  
Gas Flow : 350  
Scan ES-  
7.35e3

170929-26- 71 (1.312) Cm (70:92)



## Sample Description

Analyzed date: 2014-09-29  
Analyst: YU  
Sample: C-13  
M.W.: 1521.63  
Lot. No.: P140921-CJ609741

## Instrument

Waters ZQ2000  
Probe: ESI  
Nebulizer Gas Flow: 1.5L/min  
CDL: -20.0v  
CDL Temp.: 250 °C  
Block Temp.: 200 °C

Probe Bias: + 4.5kv  
Detector: 1.5kv  
T. Flow: 0.2ml/min  
B. Conc.: 50% H<sub>2</sub>O/50% ACN