

MASS SPECTROMETRY REPORT

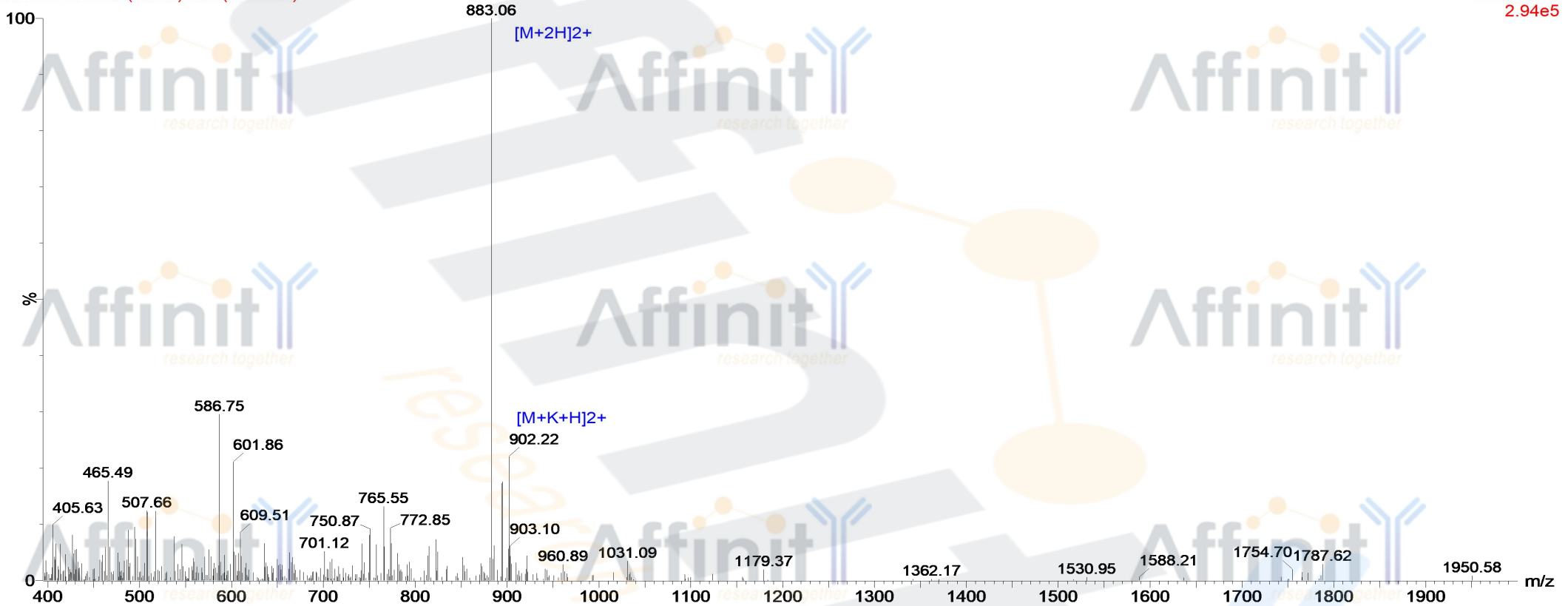
09-Oct-2017
16:36:58

Probe: ESI
Cone: 50v
Desovation Temp :350

Capillary:3.00KV
Extractor: 5v
Gas Flow : 350

171009-62 369 (6.820) Cm (368:369)

Scan ES+
2.94e5



Sample Description

Analyzed date: 2014-10-09
Analyst: YU
Sample: C-14
M.W.: 1763.73
Lot. No.: P140921-CJ609727

Instrument

Waters ZQ2000
Probe: ESI
Nebulizer Gas Flow: 1.5L/min
CDL: -20.0v
CDL Temp.: 250 °C
Block Temp.: 200 °C

Probe Bias: + 4.5kv
Detector: 1.5kv
T. Flow: 0.2ml/min
B. Conc.: 50% H₂O/50% ACN