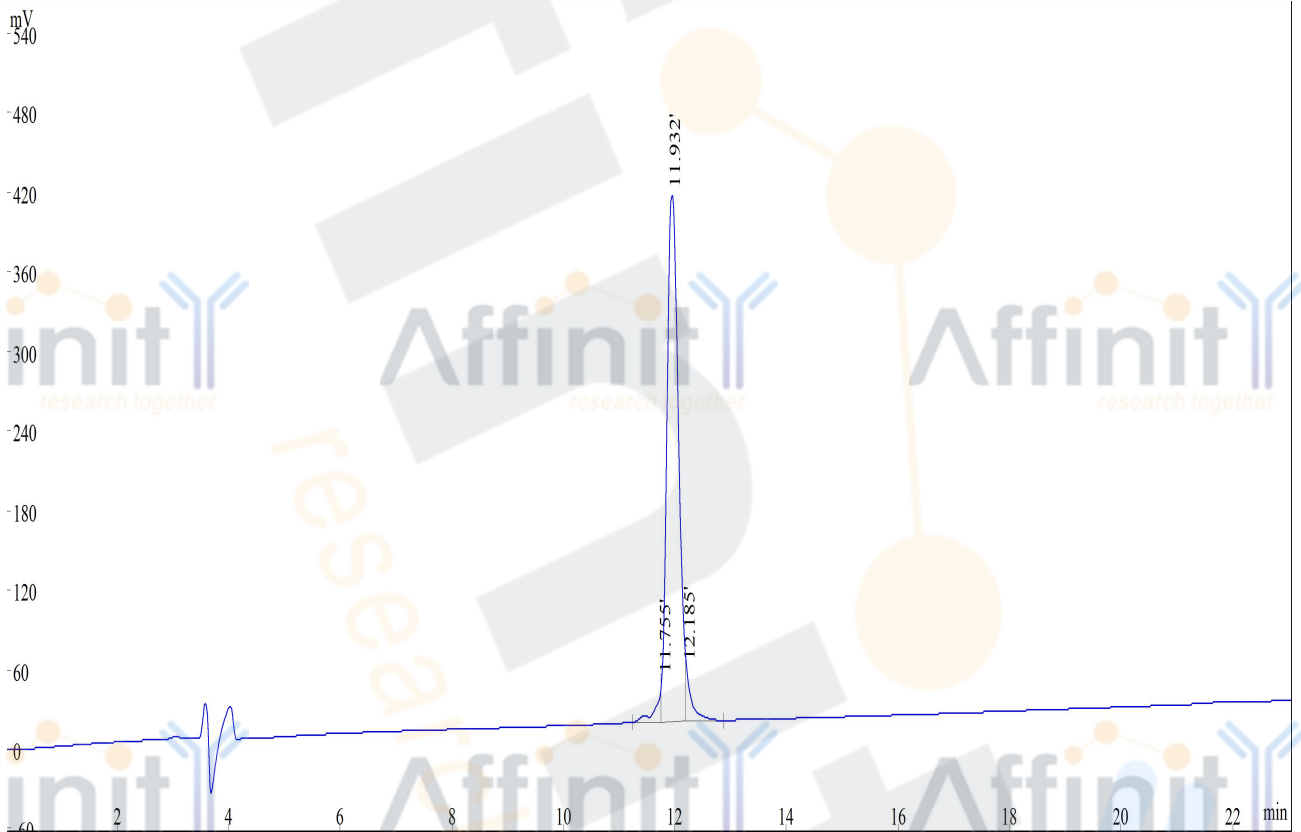


HPLC REPORT

Sample: C-14 Analyzed date: 2014-10-09
Analyst: FS
Lot. No.: P140922-LL609288
Column: 4.6*250mm, Welch CX-C18 5um
Solvent A: A: 0.1% Trifluoroacetic Acid in 100% Acetonitrile
Solvent B: B: 0.1% Trifluoroacetic Acid in 100% Water
Gradient:

	A	B
0.0min	8%	92%
25.0min	33%	67%
25.1min	100%	0%
30.0min	Stop	

Volume: 20µl
Wavelength: 220nm
Flow rate: 1.0ml/min



Rank	Time	Conc.	Area
1	11.755	3.45	198336
2	11.932	92.16	5298559
3	12.185	4.386	252143
Total		100	5749038