

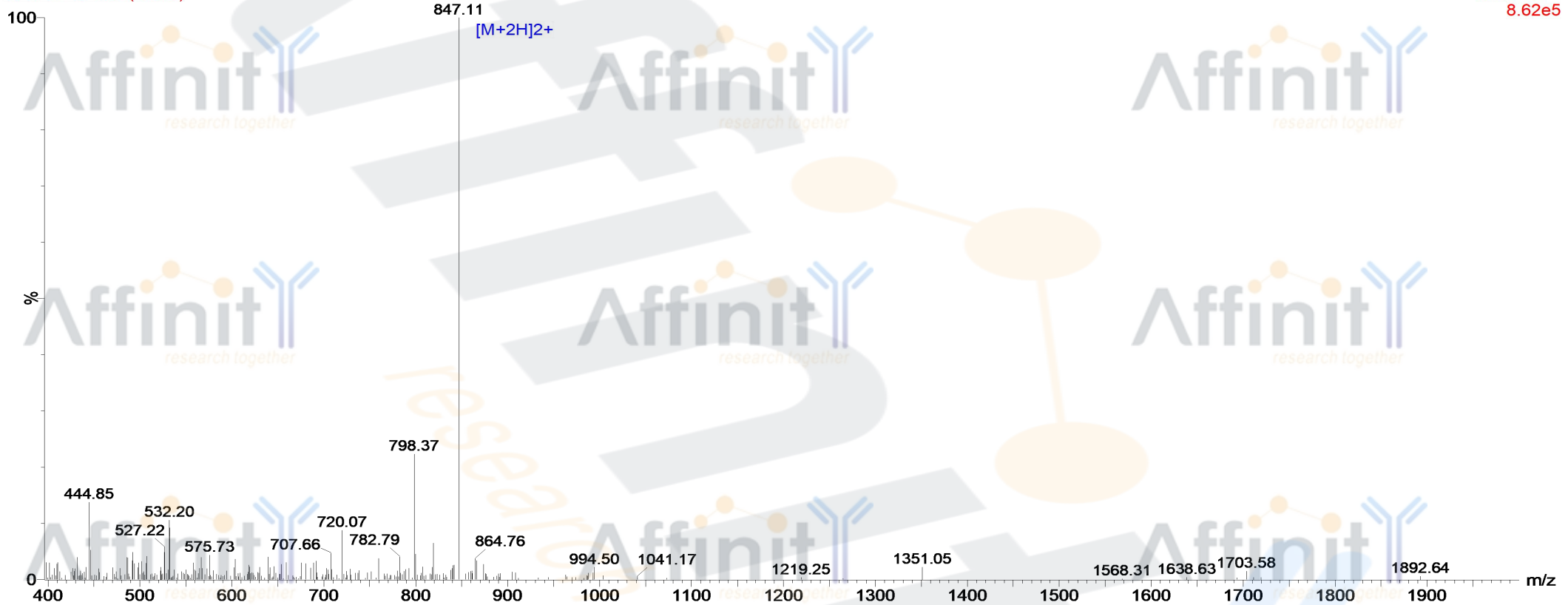
# MASS SPECTROMETRY REPORT

13-Oct-2017  
15:06:47

Probe: ESI  
Cone: 50v  
Desolvation Temp :350

Capillary:3.00KV  
Extractor: 5v  
Gas Flow : 350  
Scan ES+  
8.62e5

171013-47 295 (5.452)



Sample Description

Analyzed date: 2014-10-13  
Analyst: YU  
Sample: C-14P  
M.W.: 1691.76  
Lot. No.: P140930-SY608913

Instrument

Waters ZQ2000  
Probe: ESI  
Nebulizer Gas Flow: 1.5L/min  
CDL: -20.0v  
CDL Temp.: 250 °C  
Block Temp.: 200 °C

Probe Bias: + 4.5kv  
Detector: 1.5kv  
T. Flow: 0.2ml/min  
B. Conc.: 50%H2O/50% ACN